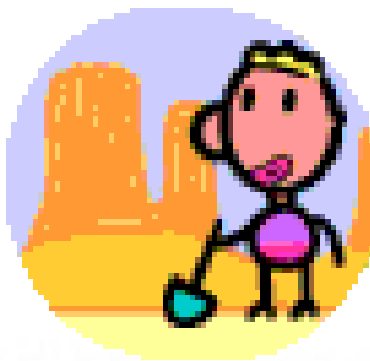


Students Dig It.... Gardening with Youth

Kiki Fontenot, PhD

Home, School and Community Gardens



innovate • educate • improve lives

for the latest research-based information on just about anything, visit our Web site: www.lsuagcenter.com



Benefits of Gardening

- Gain Responsibility
- Acquire new skills
- Eat healthier (try new foods)
- New learning environment
- Appreciate nature



Are School Gardens Really Making a Difference?

- Challenge youth to learn new skills
- Increase science scores
- Increase environmental stewardship



We're Not Too Little!



Other Limits?



innovate · educate · improve lives

for the latest research-based information on just about anything, visit our Web site: www.lsuagcenter.com



Before You Start...

- **Principal**
 - **Seek permission**
- **Participating teachers**
 - **Time restraints**
 - **Curriculum**
 - **Class information**
- **School Staff**
 - **Holiday schedules**
- **Volunteers**
 - **Sustainability**
- **Patrons**
 - **\$\$\$**
- **STUDENTS!!!**
 - **Interest**



Seeking Help

- Students are the #1 owners and workers
- Parents
- School Staff
 - Janitorial
 - Cafeteria
 - Shop teacher
- Master Gardeners
- Local college faculty and students



Garden Site Selection

- **Space limitations**
 - One vs. multiple gardens
- **Proximity to classroom(s)**
 - 6-8 hrs of sunlight a day
 - Water source
 - Good drainage
 - Room for expansion
 - **START SMALL then have a 1st.....5th year plan**



innovate . educate . improve lives

for the latest research-based information on just about anything, visit our Web site: www.lsuagcenter.com



Garden Design

- Assign garden space to participants
- Theme Gardens
 - Pizza garden
 - Alphabet garden
- Multiple Purpose Gardens
 - Vegetable
 - Cut flower
 - Herb
 - Ornamental
 - Native plant
 - Cultural themes
- Connecting the green space with hard-scape



innovate • educate • improve lives

for the latest research-based information on just about anything, visit our Web site: www.lsuagcenter.com



Design Considerations

- Let students design
- Think about: In ground beds vs. raised beds or container gardening
- Row/ Bed widths
 - Row = 3ft
 - Between rows 4-5ft
- Row/ Bed heights
 - 8-12 inches
- Seating, composting, greenhouse areas



Neat School Gardens



Sarah Tyree
Godparents
Sam & Mary

University West
Neighborhood
Association

Tarrant County
Sheriff's
Department



using
from
neat
home

visit our W













LSU
AgCenter
Research & Extension





**YOU CAN EVEN PLANT
A REALLY small garden**

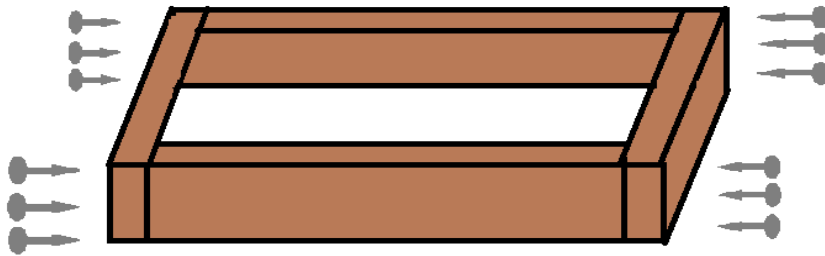


Typical Garden Bed

Materials Needed:

- (2) 2" x 12" x 8' treated boards
- (2) 2" x 12" x 4' treated boards
- (12) 3" deck screws
- (1) Hand drill and appropriate drill bit for your screws

Instructions



- Fill the container with soil approximately 10 inches deep. Then plant edibles of choice in the container.



innovate • educate • improve lives

for the latest research-based information on just about anything, visit our Web site: www.lsuagcenter.com



Finished Product



innovate • educate • improve lives

for the latest research-based information on just about anything, visit our Web site: www.lsuagcenter.com



Choosing Soil for Raised Beds

- No huge pieces of bark
- Ask the provider for soil test results
 - pH 5.5-7.0
 - Was fertilizer incorporated?
- Generally “1Bark:1Peat:1Sand” is BEST
- There are no “bagged soils” for vegetable raised beds on the market.



innovate • educate • improve lives

for the latest research-based information on just about anything, visit our Web site: www.lsuagcenter.com



Every 3 Years Test the Soil

- Take 5 to 6 shovels of soil from garden beds
- Mix in a bucket
- Select one pint of soil out
- Send to LSU Soils Lab
 - (\$15/sample- basic analysis only)
 - <http://www.stpal.lsu.edu/>



innovate • educate • improve lives

for the latest research-based information on just about anything, visit our Web site: www.lsuagcenter.com



Common Soil Problems

1. Avoid using tools in Raised beds and Native Soil
2. Mix soil in beds/containers – don't layer
3. Avoid over-watering in containers



Planting the Garden

- Plant and harvest crops within the school year



innovate • educate • improve lives

for the latest research-based information on just about anything, visit our Web site: www.lsuagcenter.com



Maintaining the Garden

Fertilize

- Pre-plant fertilization
- Side dressing

Irrigate

- Invest in a timer!
- Drip hoses

Weed Control

- Hand pull, hoe, cultivate



innovate • educate • improve lives

for the latest research-based information on just about anything, visit our Web site: www.lsuagcenter.com



Insects!!!! Oh NO!!!!



Commonly Used Organic Insecticides

Common Chem. Name	Trade Name(s)	Manufacturer/brand
Bacillus thuringiensis (B.t.)	Dipel dust, BT Worm killer, Thuricide	Fertilome, Hi-Yield, Greenlight, Bonide
Oil	Sun spray Ultra Fine Oil, Parafine Horticultural Oil	Security products, Southern Ag
Pyrethrin	Tomato and Vegetable, Tomato Vegetable Insect Spray	Safer, Spectracide
Spinosad	Lawn and Garden Spray with Spinosad	Greenlight
Neem	Greenlight Neem Concentrate, Triple Action Neem Oil	Greenlight, Southern Ag

Harvest

- Have a harvest party
- Keep it simple:
 - Pick, Wash, Eat
 - Materials Needed:
 - Bowls and dressing



**BUT in the case of a ProStart Class.....
I bet you'll make this really interesting!**

innovate . educate . improve lives

for the latest research-based information on just about anything, visit our Web site: www.lsuagcenter.com



Connecting the Garden to the Classroom

- **Use the garden as a classroom**
 - Reading area
 - Math and measurements
 - Science (pollination, photosynthesis, life cycles)
 - Art (customize benches, borders, signs, paintings, murals, etc.)



innovate • educate • improve lives

for the latest research-based information on just about anything, visit our Web site: www.lsuagcenter.com



Combine Culinary Skills with Other Core Subjects!

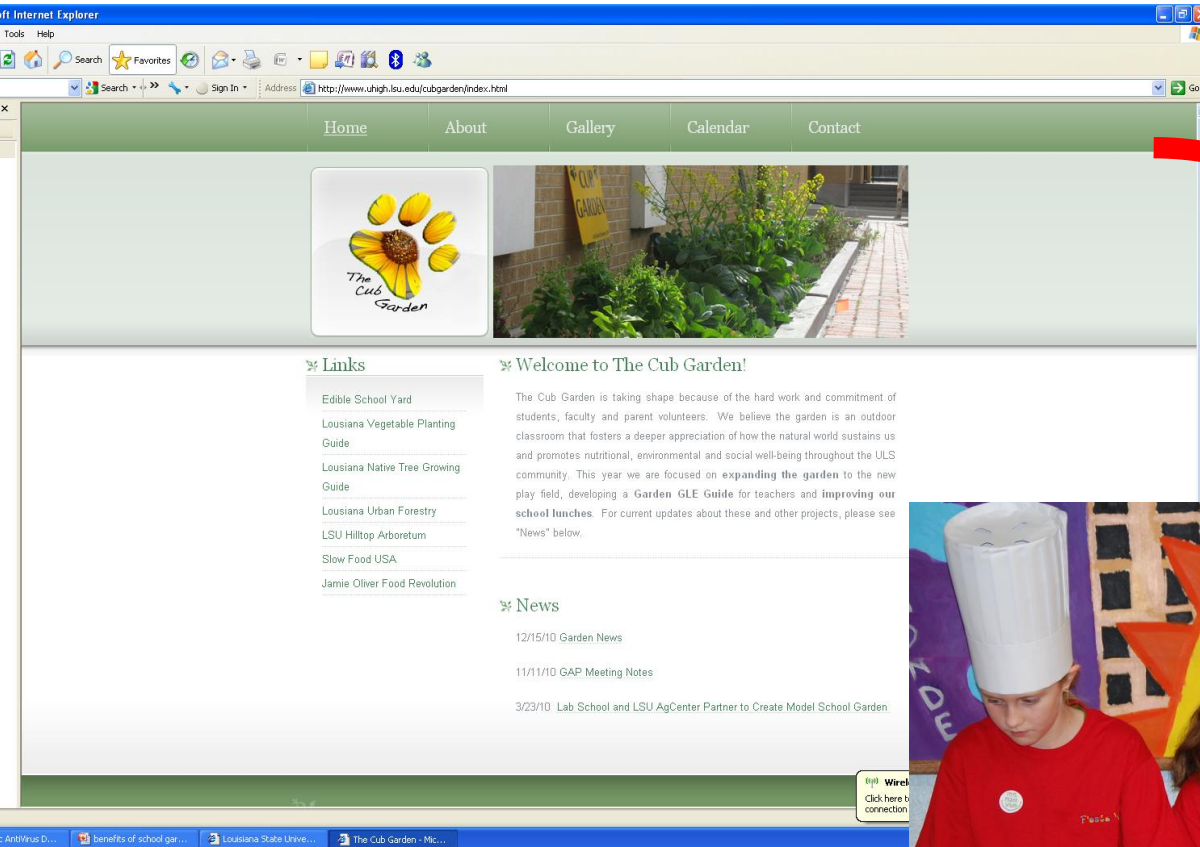


innovate • educate • improve lives

for the latest research-based information on just about anything, visit our Web site: www.lsuagcenter.com



Internet Technology, Mass Media & Culinary Skills



Fundraising

Solicit Funding

– Grants

- Captain Planet Foundation
- Gardenburger™
- Target
- Home Depot
- Welch's Grape Juice

– Personal endowments

– Fundraisers

– Donations

- Local nurseries and hardware stores

innovate · educate · improve lives

for the latest research-based information on just about anything, visit our Web site: www.lsuagcenter.com



School Garden Resources

- **LSU AgCenter**
 - www.lsuagcenter.com
 - **Lawn and Garden – School Gardens**
- **Veggie Bytes School Garden Newsletter**
 - www.lsuagcenter.com/veggiebytes
- **Steps to a Successful School Garden**
- **Insect Management in the School Garden**
- **Growing a School Butterfly Garden**
- **Food safety in the School Garden**
- **Growing Herbs in the School Garden.... Release Date – Summer 2015.**
- **KidsGarden.org** <http://www.kidsgardening.org/>



innovate . educate . improve lives

for the latest research-based information on just about anything, visit our Web site: www.lsuagcenter.com



HAVE FUN!



innovate • educate • improve lives

for the latest research-based information on just about anything, visit our Web site: www.lsuagcenter.com



EAT WELL!



innovate • educate • improve lives

for the latest research-based information on just about anything, visit our Web site: www.lsuagcenter.com



Questions?

Contact Kiki Fontenot, PhD
LSU AgCenter

kkfontenot@agcenter.lsu.edu



innovate · educate · improve lives

for the latest research-based information on just about anything, visit our Web site: www.lsuagcenter.com

