

Non-Single Family

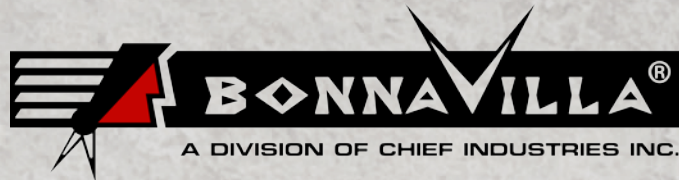
MODULAR HOMES



Efficient, Affordable, Modular

Non-Single Family

MODULAR HOMES



FLOOR PLAN INDEX

MID-SCALE / ATTACHED SINGLE FAMILY

ALEXANDER	11
ALMONT	24
AWARRI	20
COLUMBUS	23
DAVENPORT	15
DRAKE	16
ELGIN I	12
ELGIN II	13
ELGIN III	14
LANSFORD	17
MONTANA VISTA	21
RICHLAND	22
SHERWOOD	18
STANTON	19

SMALL SCALE/ TEMPORARY LIVING

COLFAX	10
FRONTIER	6
HALLSBORO	7
HARVEY	8
MAPELTON	9
PORTLAND	4
TIOGA	5

LARGE SCALE / MULTI-FAMILY

EMERALD VIEW	26
HARWOOD	25

*BONNAVILLA INVESTS IN CONTINUOUS PRODUCT AND PROCESS IMPROVEMENT IN OUR HOMES. PLANS, DIMENSIONS, FEATURES, MATERIALS, SPECIFICATIONS, AND AVAILABILITY REPRESENTED ARE SUBJECT TO CHANGE AT ANY TIME, WITHOUT NOTICE OR OBLIGATION. ELEVATIONS AND RENDERINGS ARE FOR DESIGN PURPOSES ONLY AND MAY REFLECT OPTIONAL ITEMS, ITEMS SUPPLIED ON-SITE BY OTHERS, OR ITEMS NOT AVAILABLE ON CERTAIN PROJECTS OR IN CERTAIN AREAS.

Standard features

Non-Single Family

CONSTRUCTION

- * 2x10 Floor Jost 16" o.c.
- * Marriage Line LVL W/ Inline Heat Duct
 - * T&G OSB Floor Deck
 - * 2x6 Exterior Wall Framing
 - * OSB Ext. Wall Sheathing (Typical)
- * House Wrap Siding Underlayment
 - * 4" Dutch Lap Vinyl Siding
- * Perimeter Insulation in Floor Cavity
- * R-19 Batt Insulation - Ext. Wall Insulation
- * R-40 Blown Insulation - Roof/Ceiling
 - * 3/12 Roof Pitch - 40# Roof Load
 - * 8' Sidewalls (w/ Flat Ceilings)
 - * Architectural Shingles
 - * 12" Overhang

INTERIOR WALLS/ CEILING

- * Orange Peel - Interior Drywall Texture
 - * 1/2" Drywall Walls
 - * 5/8" Drywall Ceilings
- * 2 Panel White Painted Interior Doors
 - * White Painted Base & Case
 - * Nickel Interior Door Knobs
- * Window Blinds (White) - Throughout

HEATING

- * Gas Furnace & Duct Work
- * Inline Heat Duct (Supply) and Crossover

ELECTRICAL

- * 200 Amp Electric Service w/ 40 spaces
- * Smoke Alarms/CO2 Detection w/Battery Back-up
- * (2) Weather Resistant Exterior GFIs (Front/Rear)
- * Nickel Trimmed Surface Mount Light - Throughout
 - * (1) Light over Sink, (1) Light Centered in Kitchen
 - * Bathroom Vanity Bar Lights
- * Pendant Light - Dining & Morning Rooms

WINDOW / EXTERIOR DOORS

- * Vinyl - Single Hung White Low-E Windows
- * 36" x 80" 6-Panel Fiberglass - White - Front/Rear door w/
Nickel Knob & Deadbolt

KITCHEN

- * BonnaVilla Signature Cabinetry - Kensington Oak Doors
 - * Crown Molding on Overhead Cabinets
 - * Laminate Counter Tops / Edge
 - * 6" Tile Backsplash
- * 18 C.F. Frost Free Double Door Refrigerator-White
- * 30" Freestanding Electric Range -White
- * 30" Lighted Range Hood w/Recirculating Vent - White
 - * Dishwasher (white)
- * Double bowl Stainless Steel Top-Mount Sink
- * High Arch Single Lever Faucet w/Spray - Chrome
 - * 16" x 16" Resilient Vinyl Tile Flooring
(Brick Pattern)

BATHROOM

- * BonnaVilla Signature Cabinetry - Kensington Oak Doors
 - * Laminate Counter Tops / Edge
 - * 6" Tile Backsplash
 - * Low Flow Stools - White
- * White China Lavs - Dual Lever Chrome Faucet w/
Pop-up Drains
- * 1-Piece Fiberglass (White) Tub/Shower in Main Bath
- * Fan/Light Combination (Separate Switch) in Ceiling
 - * 16" x 16" Resilient Vinyl Tile Flooring
(Brick Pattern)

UTILITY

- * Laundry Overhead Shelf
- * 40 Gallon Electric Water Heater
 - * 1 - Exterior Hydrant (Rear)
- * 16" x 16" Resilient Vinyl Tile Flooring
(Brick Pattern)

OTHER ROOM FLOORING

- * Level 1 Shaw Carpet w/6# Rebond Carpet Pad
- * Entry 16" x 16" Resilient Vinyl Tile Flooring

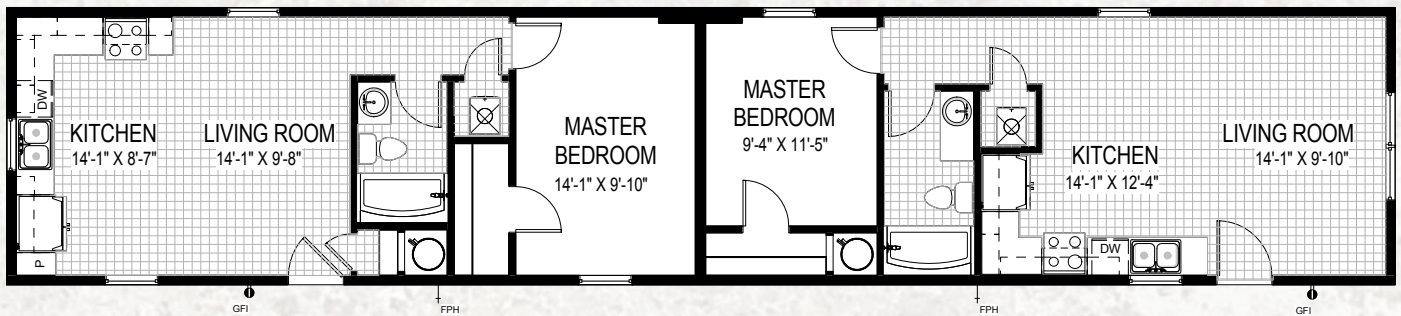
**We Engineer
Relationships.®**





PORTLAND

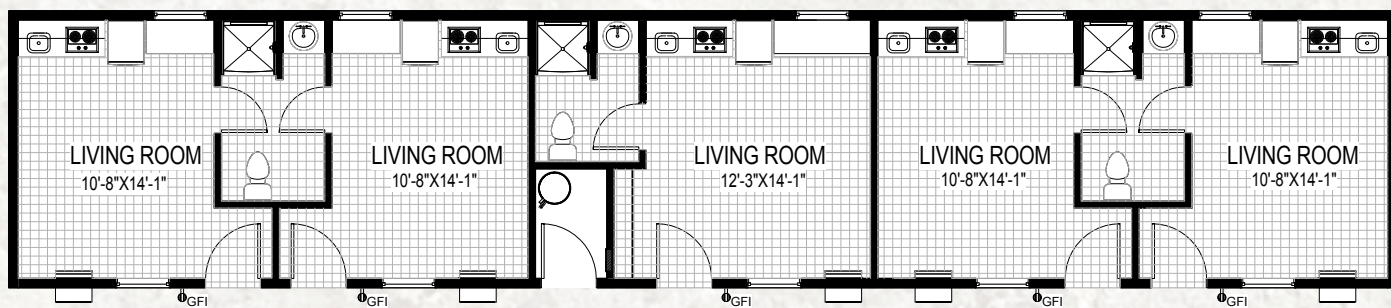
SQUARE FEET: 1152 SQFT
UNITS: 2
BEDROOMS: 1 PER UNIT
BATHROOMS: 1 PER UNIT
DIMENSIONS: 15'2" X 76'0"





SQUARE FEET: 1152 SQFT
UNITS: 5
BEDROOMS: 1 PER UNIT
BATHROOMS: .5 / 1
DIMENSIONS: 15'2" X 76'0"

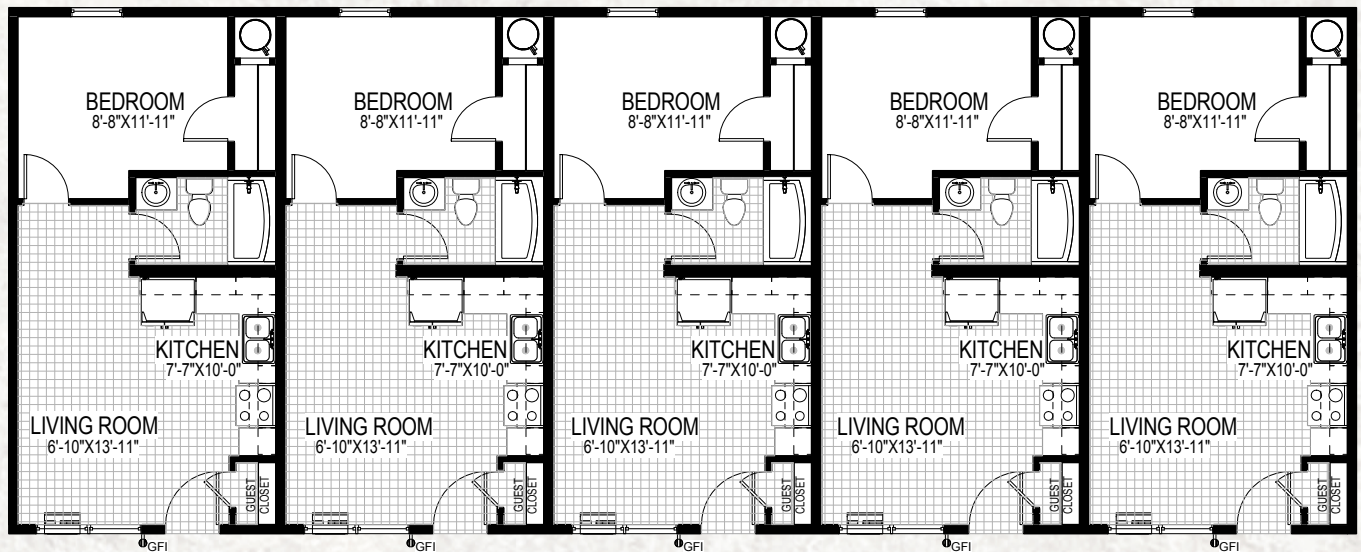
TIOGA





FRONTIER

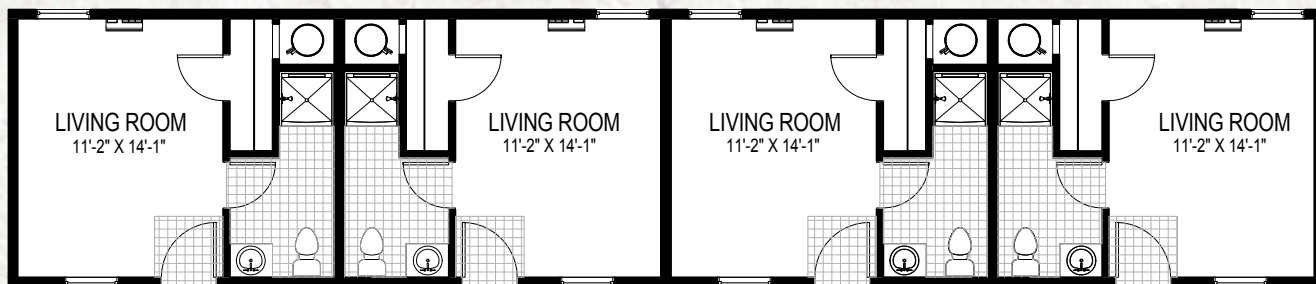
SQUARE FEET: 2255 SQFT
UNITS: 5
BEDROOMS: 1 PER UNIT
BATHROOMS: 1 PER UNIT
DIMENSIONS: 29'8" X 76'0"





SQUARE FEET: 1092 SQFT
UNITS: 4
BEDROOMS: 1 PER UNIT
BATHROOMS: 1 PER UNIT
DIMENSIONS: 15'2" X 72'0"

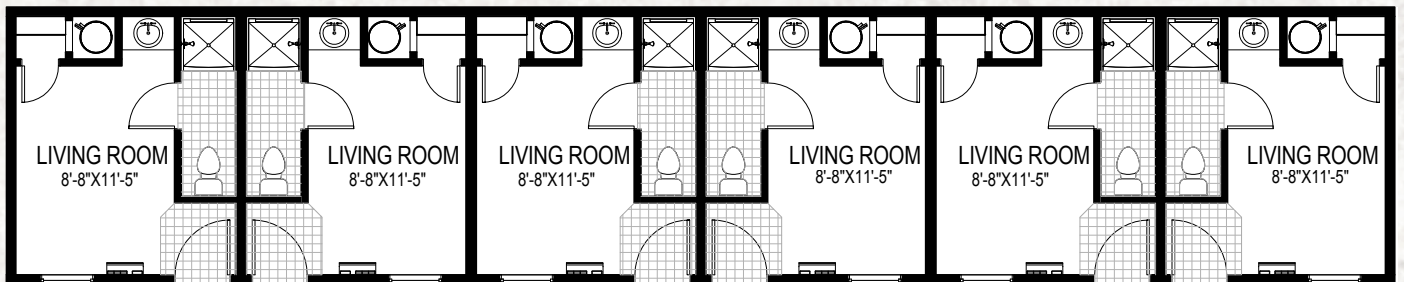
HALLSBORO





HARVEY

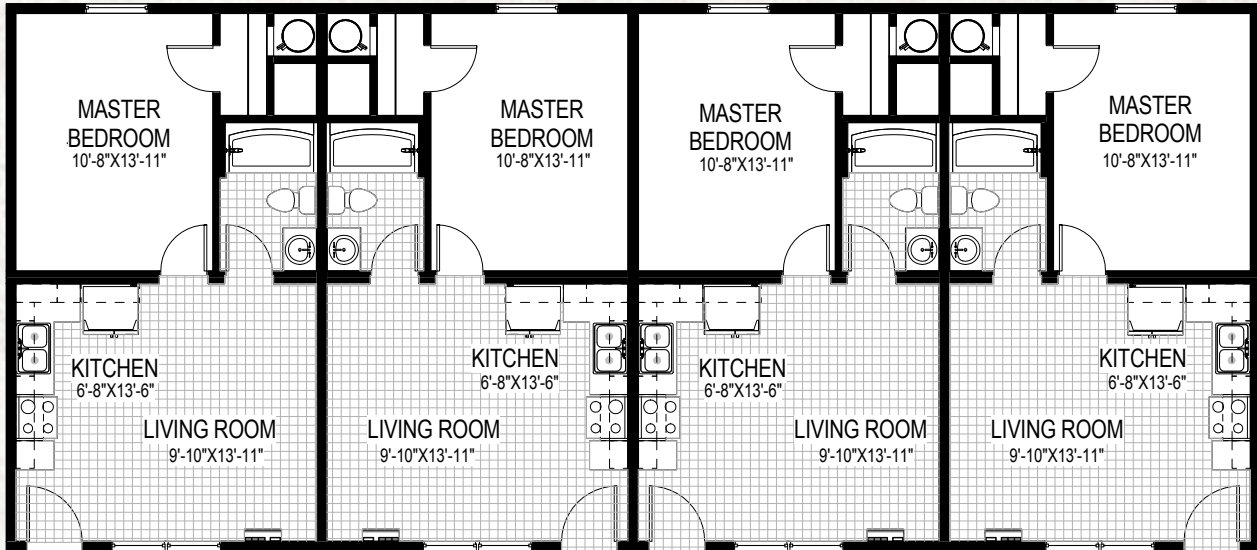
SQUARE FEET: 1152 SQFT
UNITS: 6
BEDROOMS: 1 PER UNIT
BATHROOMS: 1 PER UNIT
DIMENSIONS: 15'2" X 76'0"





SQUARE FEET: 2017 SQFT
UNITS: 4
BEDROOMS: 1 PER UNIT
BATHROOMS: 1 PER UNIT
DIMENSIONS: 29'8" X 68'0"

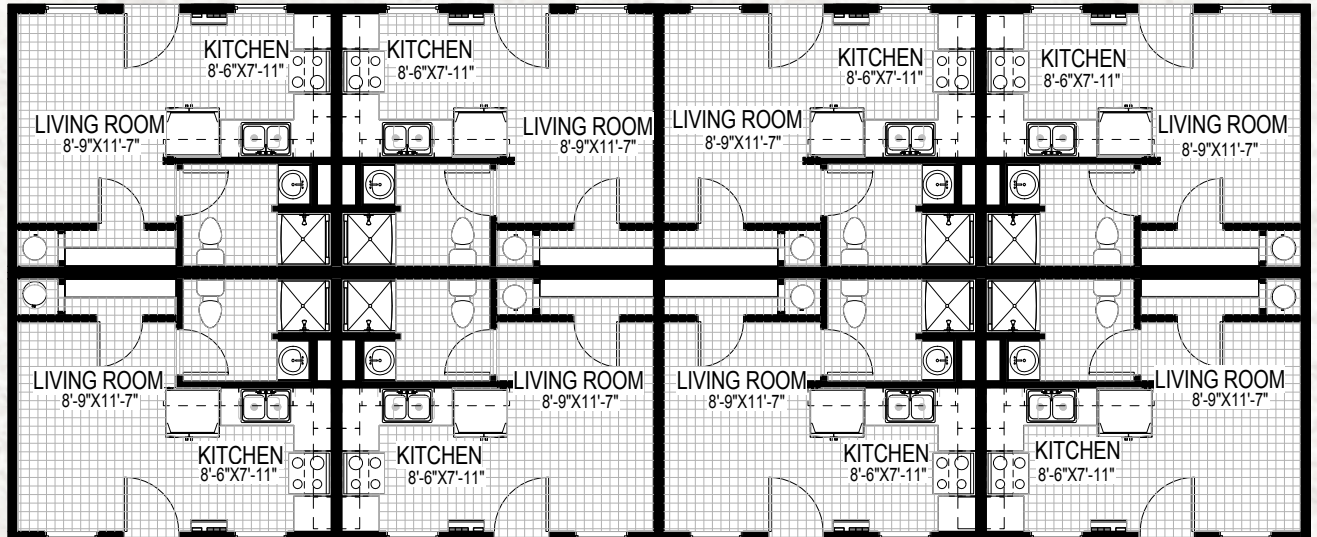
MAPLETON





COLFAX

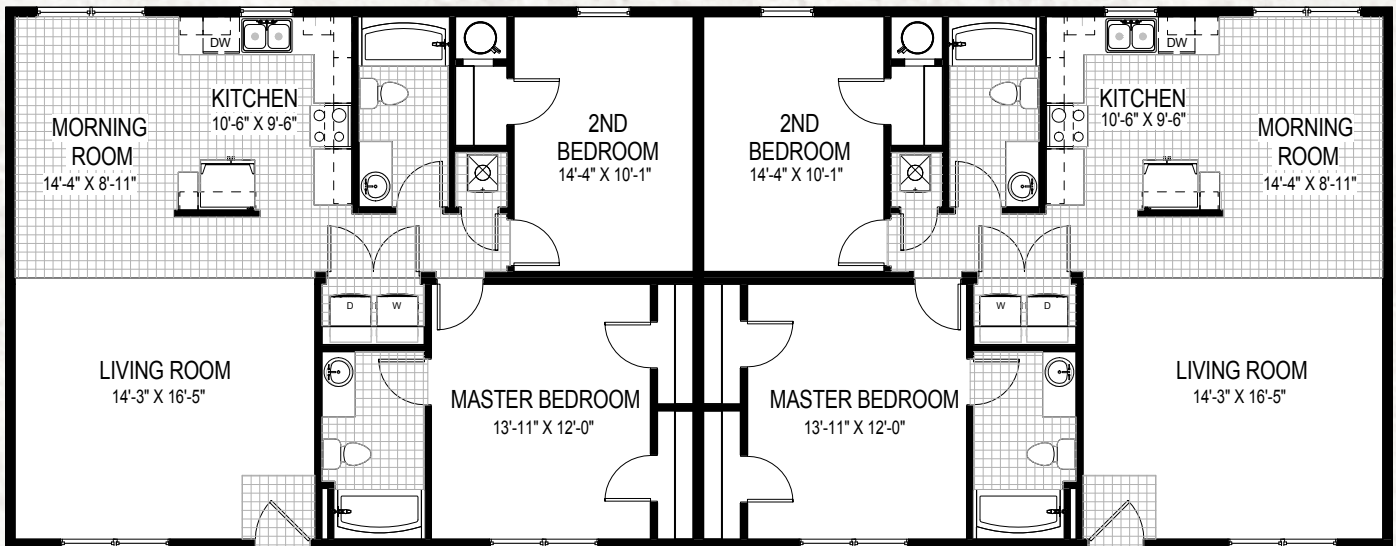
SQUARE FEET: 2136 SQFT
UNITS: 8
BEDROOMS: 1 PER UNIT
BATHROOMS: 1 PER UNIT
DIMENSIONS: 29'8" X 72'0"





SQUARE FEET: 2255 SQFT
UNITS: 2
BEDROOMS: 2 PER UNIT
BATHROOMS: 2 PER UNIT
DIMENSIONS: 29'8" X 76'0"

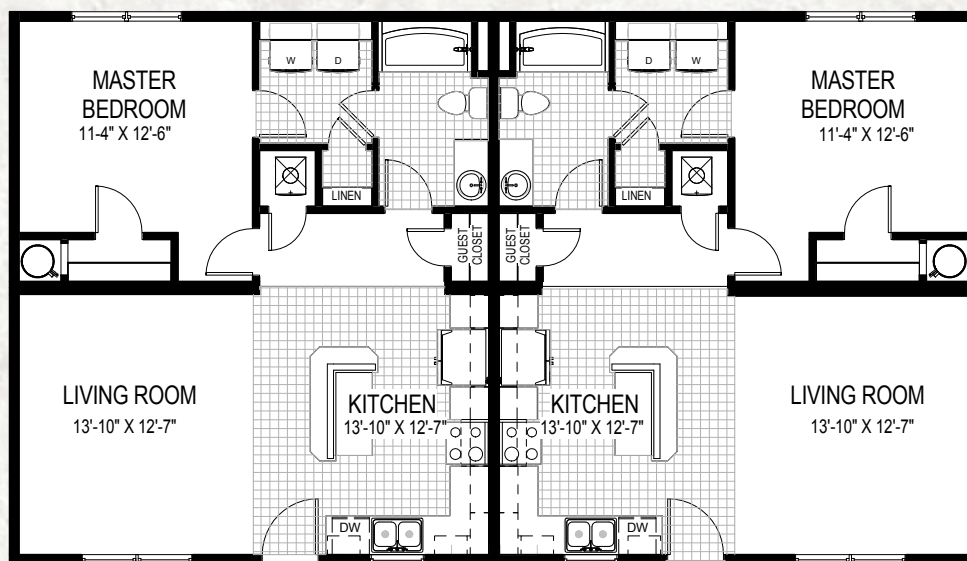
ALEXANDER





ELGIN

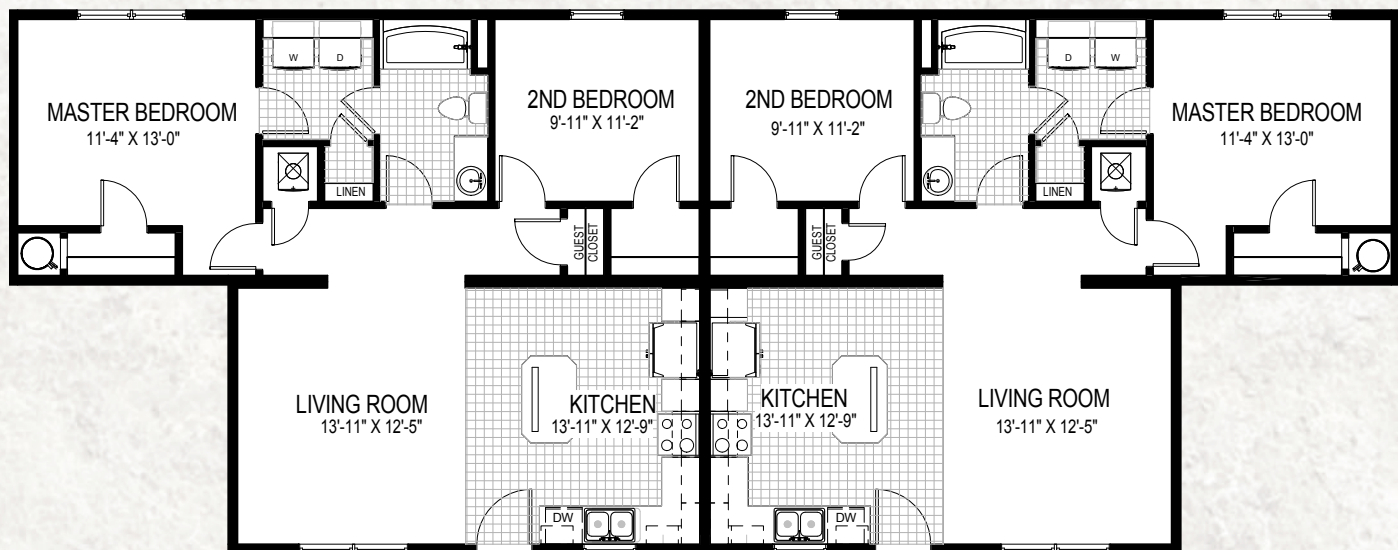
SQUARE FEET: 1543 SQFT
UNITS: 2
BEDROOMS: 1 PER UNIT
BATHROOMS: 1 PER UNIT
DIMENSIONS: 29'8" X 52'0"





SQUARE FEET: 1898 SQFT
UNITS: 2
BEDROOMS: 2 PER UNIT
BATHROOMS: 1 PER UNIT
DIMENSIONS: 29'8" X 52'0" /
76'0"

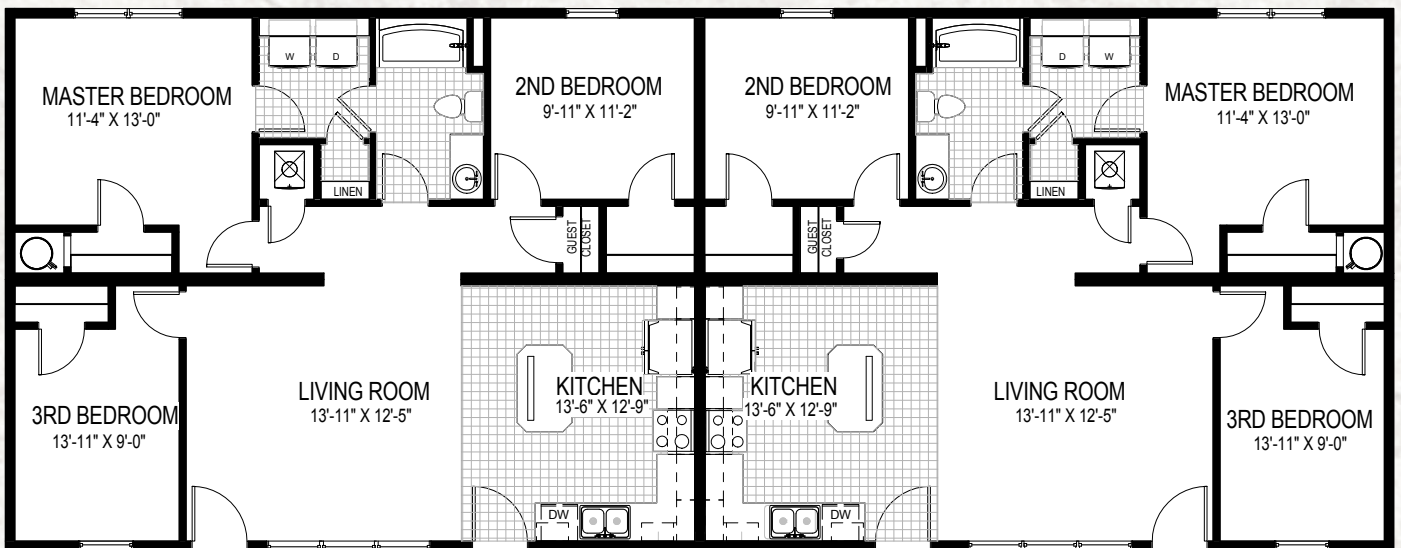
ELGIN II





ELGIN III

SQUARE FEET: 2255 SQFT
UNITS: 2
BEDROOMS: 3 PER UNIT
BATHROOMS: 1 PER UNIT
DIMENSIONS: 29'8" X 76'0"



DESIGN AND CONSTRUCTION OF A GARAGE IS THE RESPONSIBILITY OF OTHERS. ALL STATE, MUNICIPAL, AND LOCAL CODES SHALL BE ADHERED TO. IN THE ABSENCE OF THE ABOVE CODES, THE INTERNATIONAL RESIDENTIAL CODE (IRC) AS ADOPTED IN YOUR JURISDICTION SHALL BE USED AS A MINIMUM.



SQUARE FEET: 1780 SQFT
UNITS: 2
BEDROOMS: 2 PER UNIT
BATHROOMS: 1 PER UNIT
DIMENSIONS: 29'8" X 60'0"

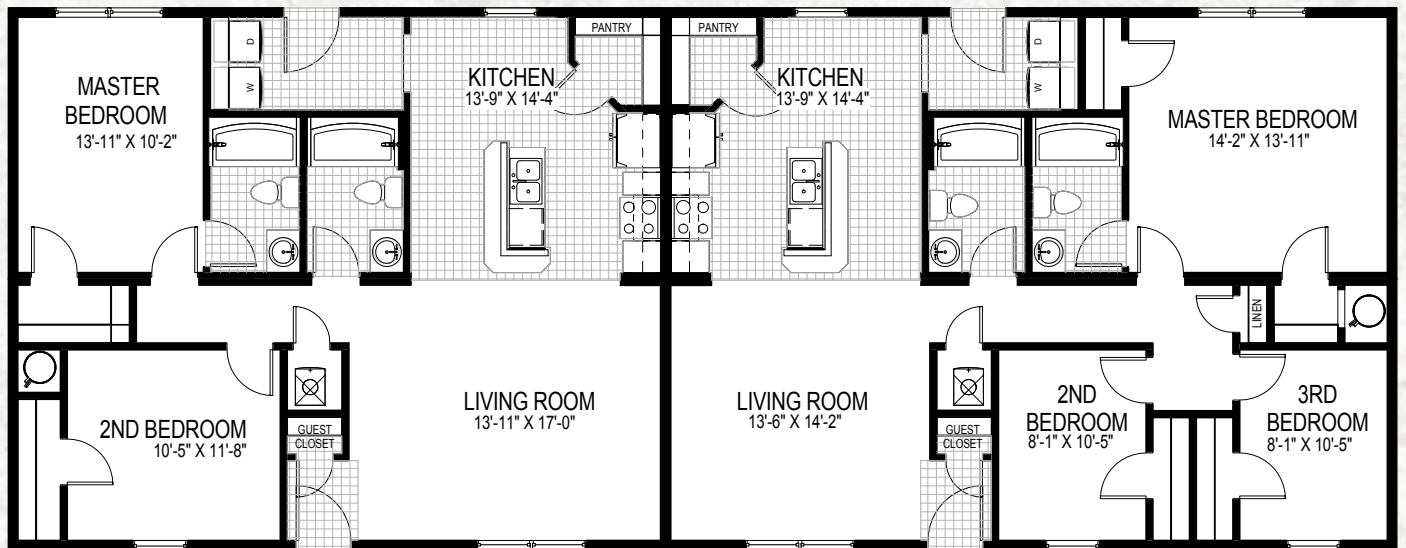
DAVENPORT





DRAKE

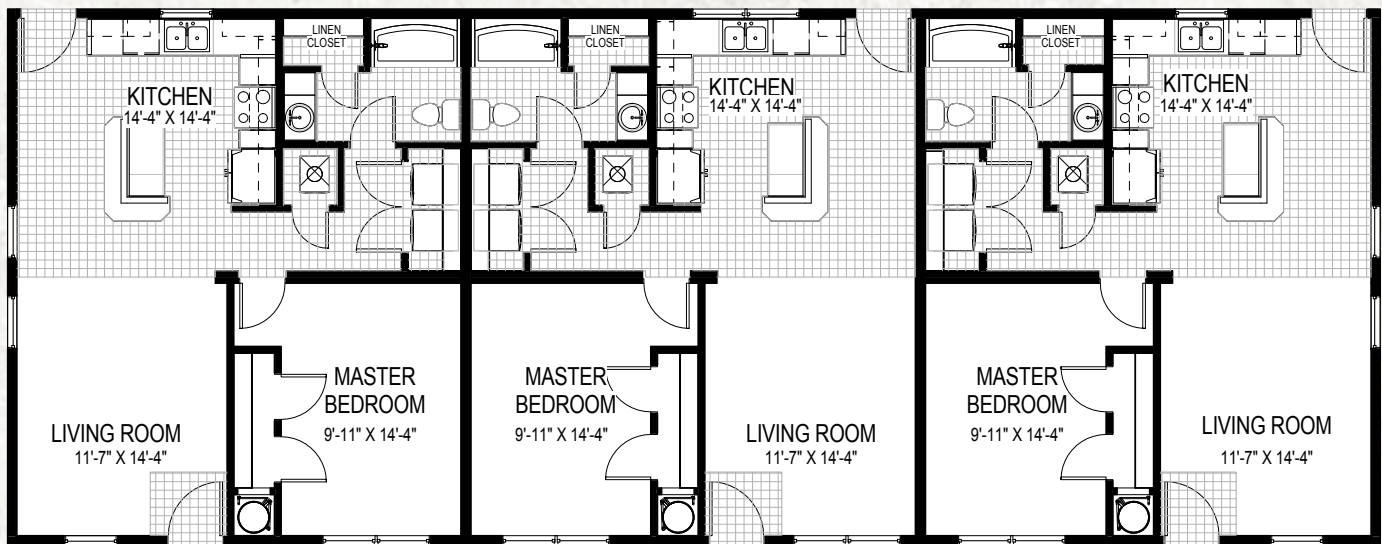
SQUARE FEET: 2255 SQFT
UNITS: 2
BEDROOMS: 2 | 3
BATHROOMS: 2 PER UNIT
DIMENSIONS: 29'8" X 76'0"





SQUARE FEET: 2255 SQFT
UNITS: 3
BEDROOMS: 1 PER UNIT
BATHROOMS: 1 PER UNIT
DIMENSIONS: 29'8"X76'0"

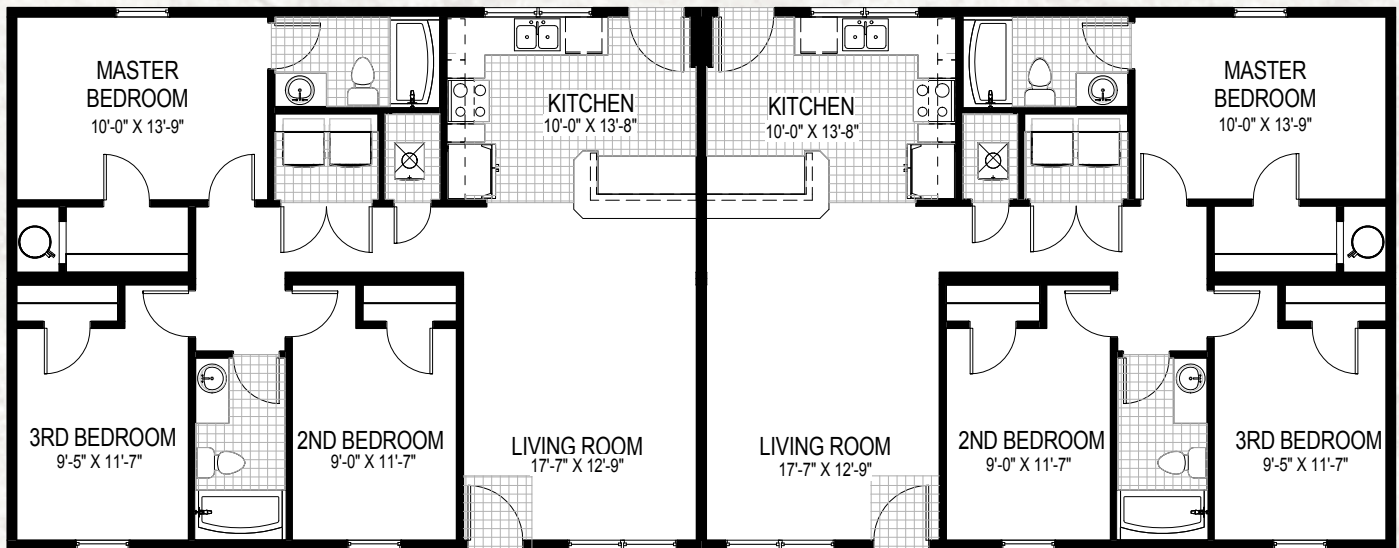
LANSFORD





SHERWOOD

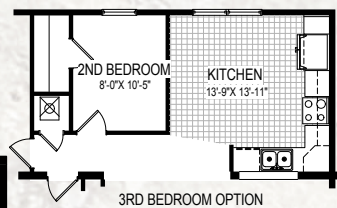
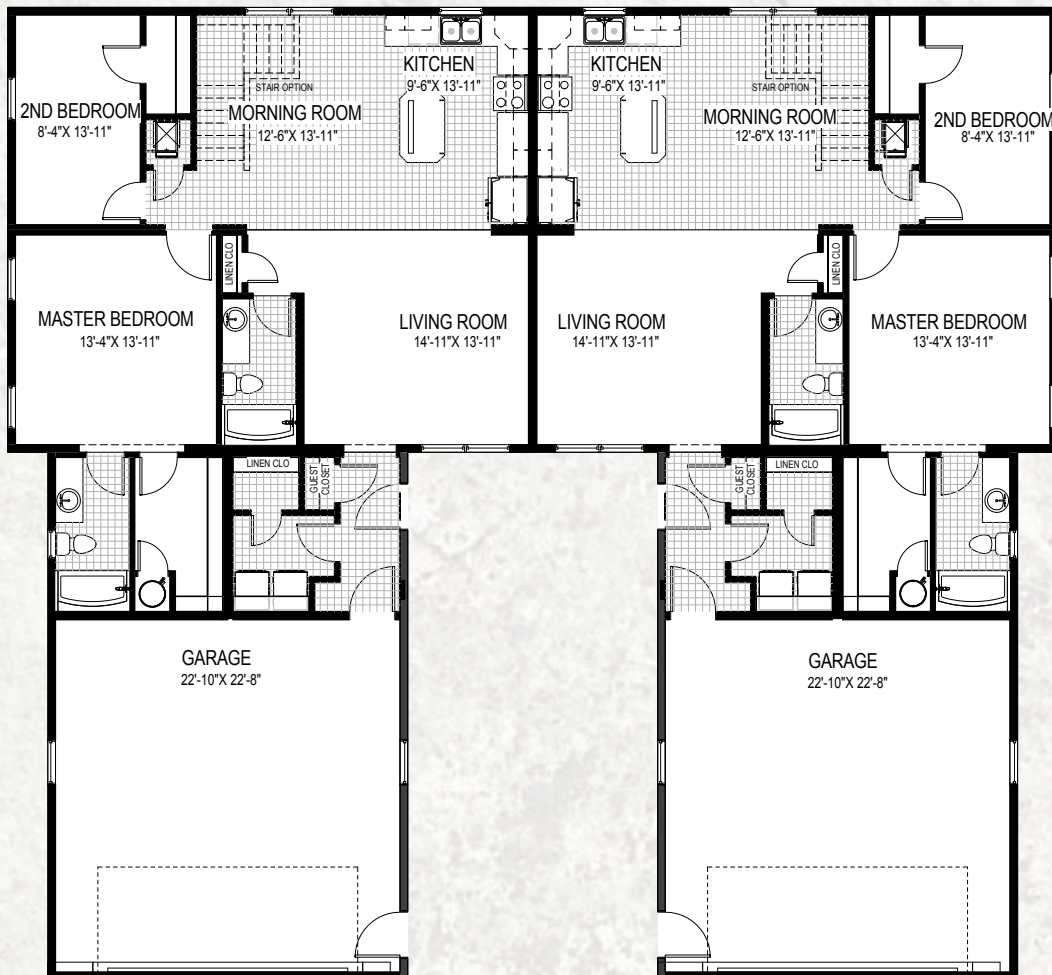
SQUARE FEET: 2255 SQFT
UNITS: 2
BEDROOMS: 3 PER UNIT
BATHROOMS: 2 PER UNIT
DIMENSIONS: 29'8" X 76'0"





SQUARE FEET: 3759 SQFT
UNITS: 2
BEDROOMS: 2 PER UNIT
BATHROOMS: 2 PER UNIT
DIMENSIONS: 29'8"X70'0"
+ (2) 24'0"X 35'2"

STANTON

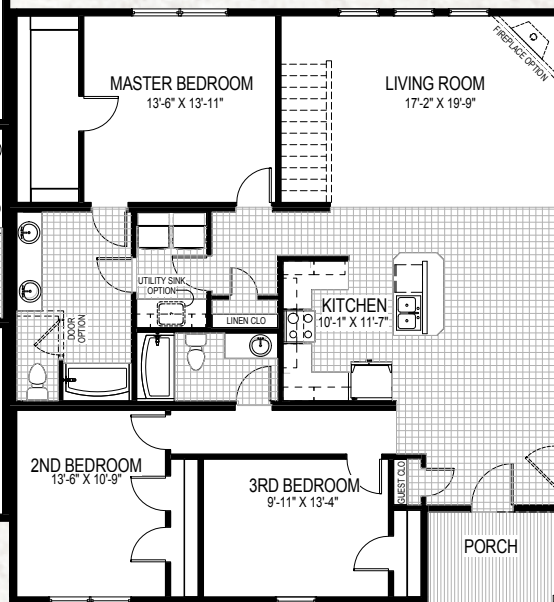
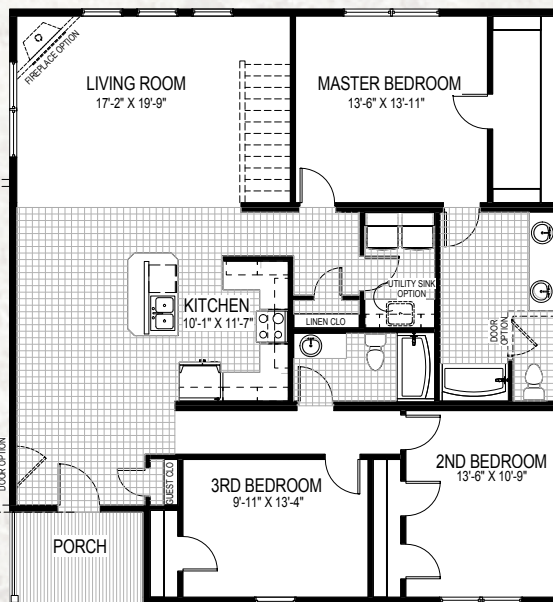




AWARRI

SQUARE FEET: 3164 SQFT
UNITS: 2
BEDROOMS: 3 PER UNIT
BATHROOMS: 2 PER UNIT
DIMENSIONS: 43'1"X80'0"

DESIGN AND CONSTRUCTION OF A GARAGE IS THE RESPONSIBILITY OF OTHERS. ALL STATE, MUNICIPAL, AND LOCAL CODES SHALL BE ADHERED TO. IN THE ABSENCE OF THE ABOVE CODES, THE INTERNATIONAL RESIDENTIAL CODE(IRC) AS ADOPTED IN YOUR JURISDICTION SHALL BE USED AS A MINIMUM.

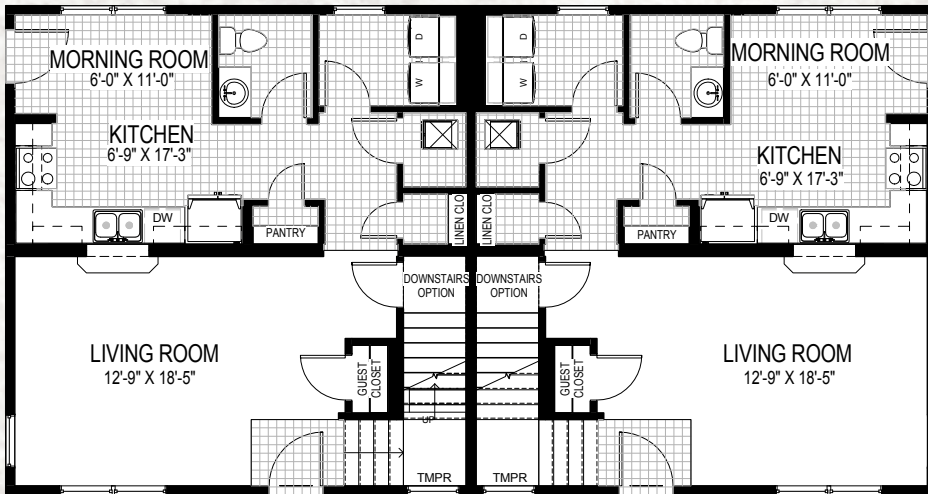


DESIGN AND CONSTRUCTION OF A GARAGE IS THE RESPONSIBILITY OF OTHERS. ALL STATE, MUNICIPAL, AND LOCAL CODES SHALL BE ADHERED TO. IN THE ABSENCE OF THE ABOVE CODES, THE INTERNATIONAL RESIDENTIAL CODE(IRC) AS ADOPTED IN YOUR JURISDICTION SHALL BE USED AS A MINIMUM.

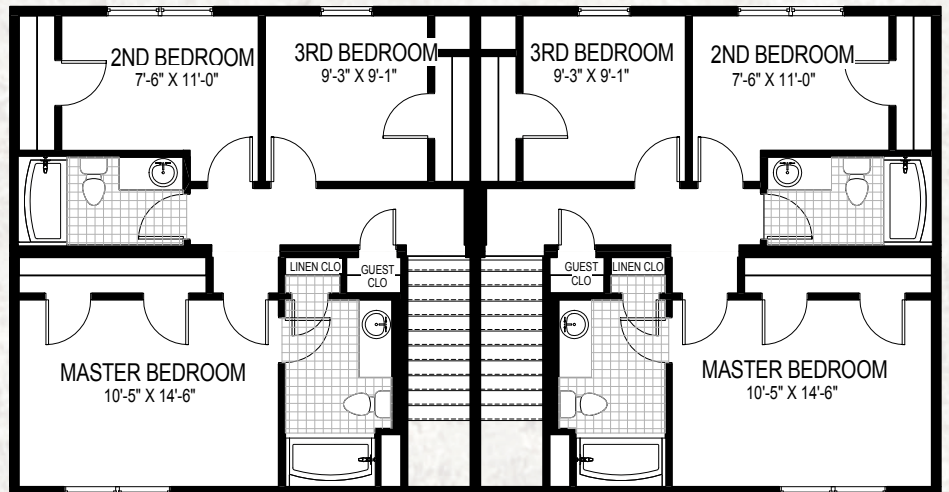


SQUARE FEET: 2843 SQFT
UNITS: 2
BEDROOMS: 3 PER UNIT
BATHROOMS: 2.5 PER UNIT
DIMENSIONS: 27'4"X52'0"

MONTANA VISTA



MAIN LEVEL

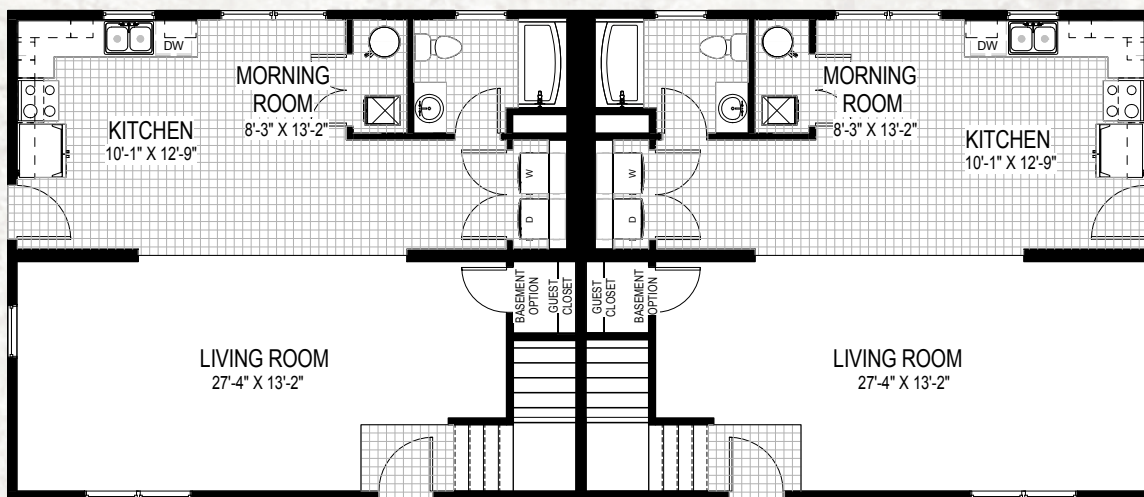


UPPER LEVEL

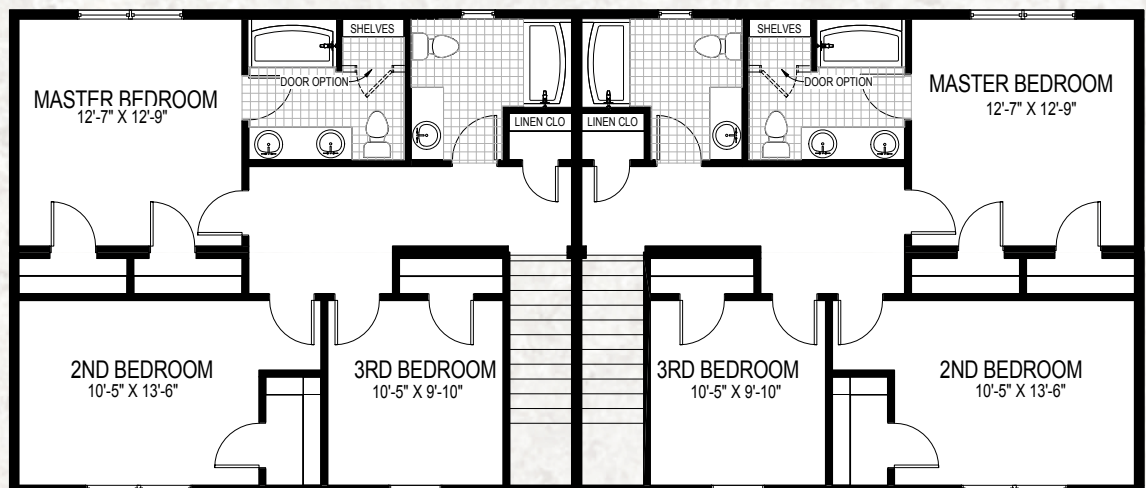


RICHLAND

SQUARE FEET: 3498 SQFT
UNITS: 2
BEDROOMS: 3 PER UNIT
BATHROOMS: 3 PER UNIT
DIMENSIONS: 27'4" X 64'0"



MAIN LEVEL

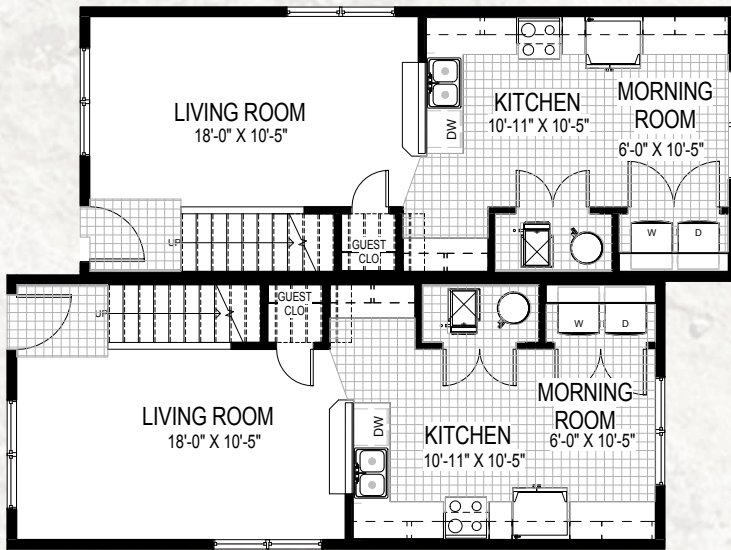


UPPER LEVEL

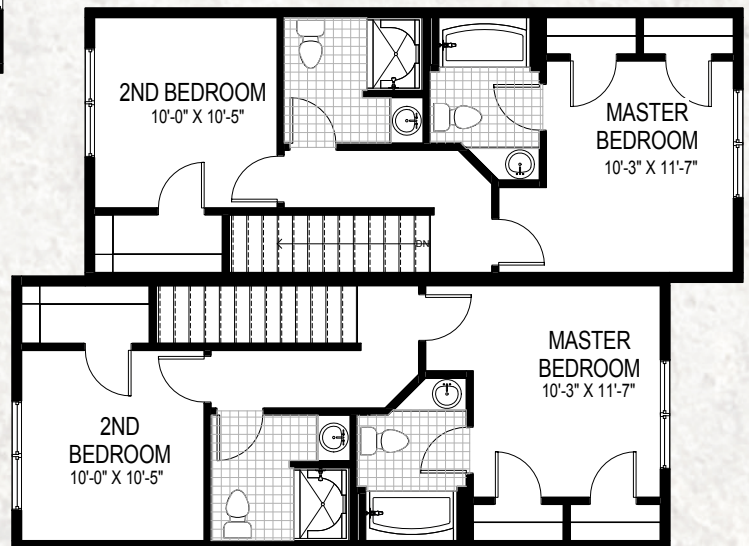


SQUARE FEET: 2136 SQFT
UNITS: 2
BEDROOMS: 2 PER UNIT
BATHROOMS: 2 PER UNIT
DIMENSIONS: 29'8"X36'0"

COLUMBUS



MAIN LEVEL

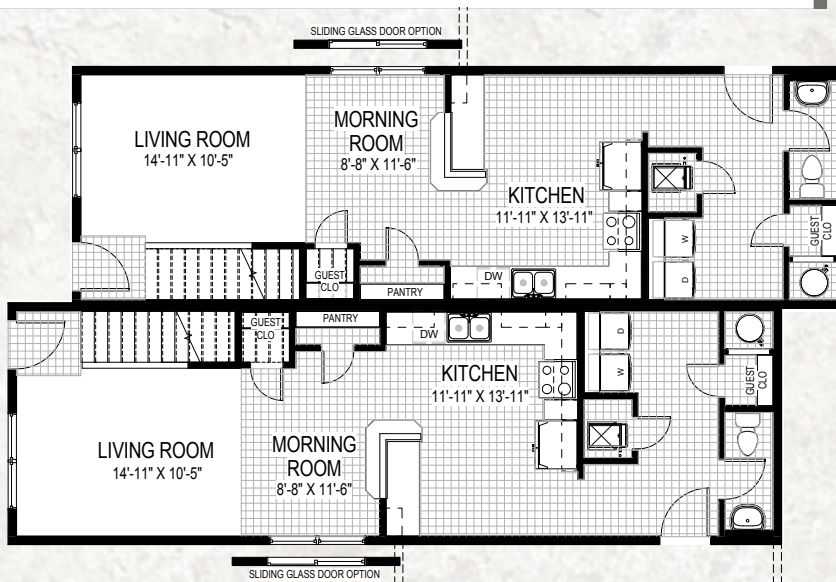


UPPER LEVEL



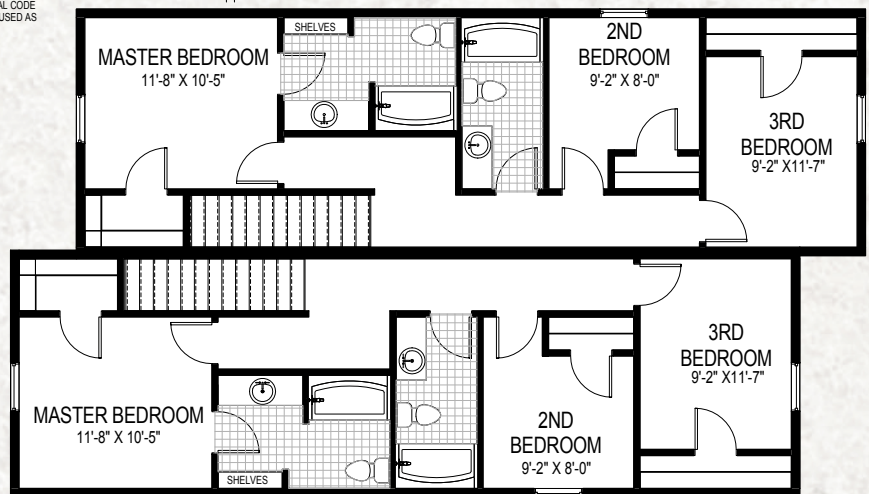
ALMONT

SQUARE FEET: 2848 SQFT
UNITS: 2
BEDROOMS: 3 PER UNIT
BATHROOMS: 2.5 PER UNIT
DIMENSIONS: 29'8" X 48'0"



MAIN LEVEL

DESIGN AND CONSTRUCTION OF A GARAGE IS THE RESPONSIBILITY OF OTHERS. ALL STATE, MUNICIPAL, AND LOCAL CODES SHALL BE ADHERED TO. IN THE ABSENCE OF THE ABOVE CODES, THE INTERNATIONAL RESIDENTIAL CODE (IRC) AS ADOPTED IN YOUR JURISDICTION SHALL BE USED AS A MINIMUM.

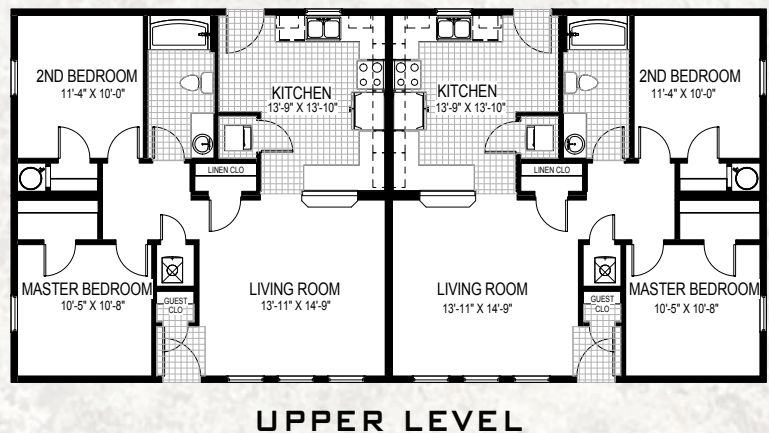
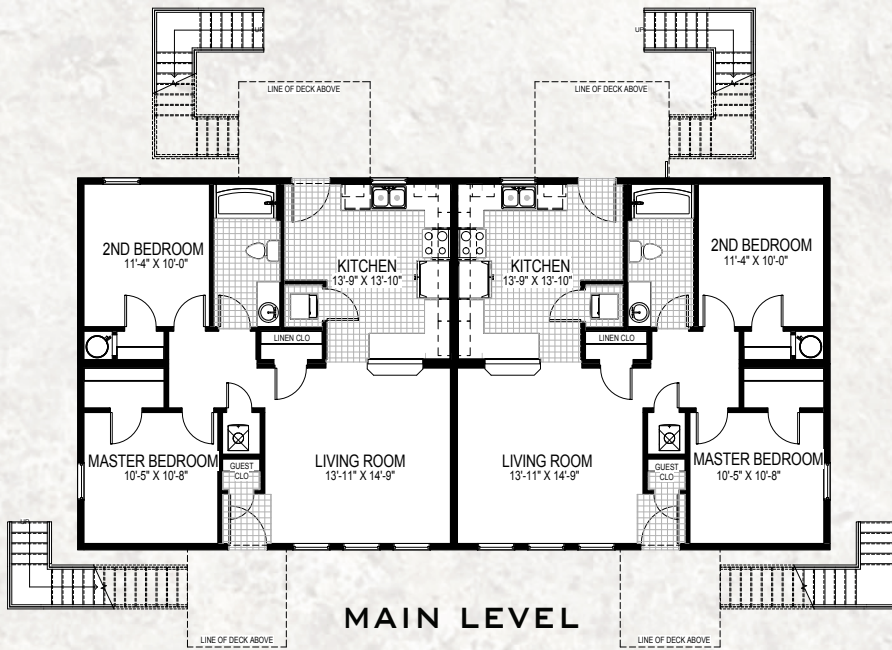


UPPER LEVEL



SQUARE FEET: 3568 SQFT
UNITS: 4
BEDROOMS: 2 PER UNIT
BATHROOMS: 1 PER UNIT
DIMENSIONS: 29'8"X60'0"

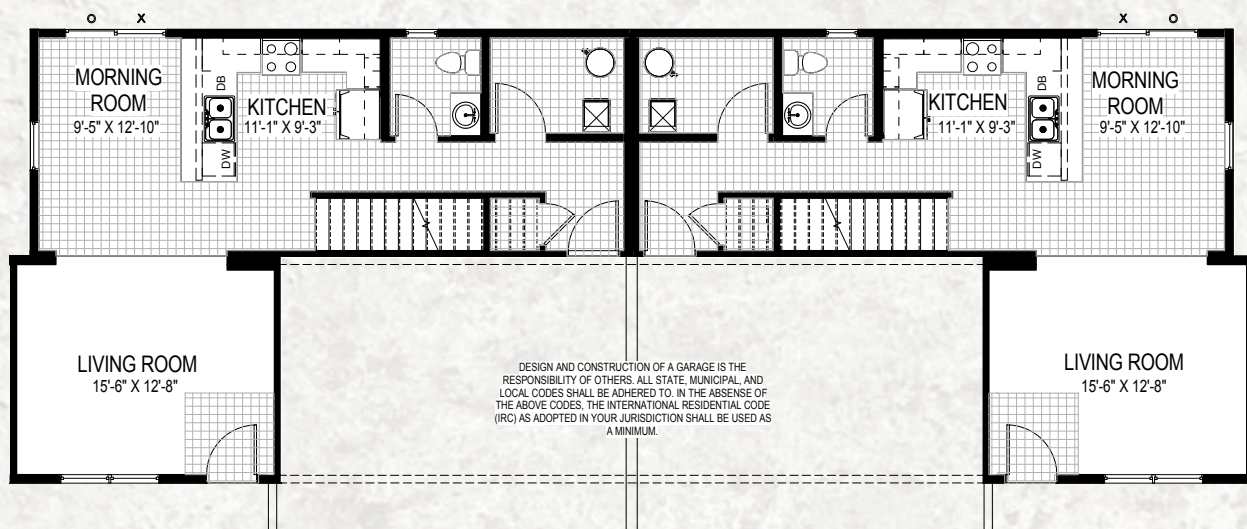
HARWOOD



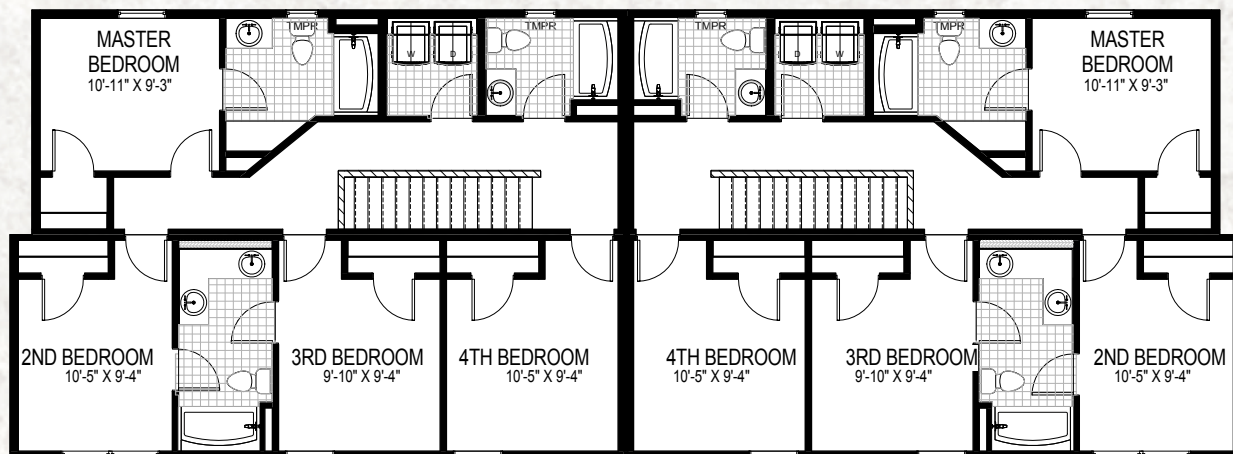


EMERALD VIEW

SQUARE FEET: 3477 SQFT
UNITS: 2
BEDROOMS: 4 PER UNIT
BATHROOMS: 3.5 PER UNIT
DIMENSIONS: 27'4" X 74'11"



MAIN LEVEL



UPPER LEVEL

AVAILABLE CONFIGURATIONS IN THIS DESIGN FOR 2, 4, OR 6 UNITS



OUR FAMILY OF BUSINESSES



CORPORATE OFFICES

CHIEF INDUSTRIES, INC.
3942 West Old Highway 30
PO Box 2078
Grand Island, NE 68802-2078
PH: 308-389-7200
FAX: 308-389-7221
corporate@chiefind.com

DIVISIONS

BONNAVILLA®
Aurora, Nebraska
PH: 402-694-5250
FAX: 402-694-5873
housing@chiefind.com

CHIEF AGRI/INDUSTRIAL
Kearney, Nebraska
PH: 308-237-3186
FAX: 308-237-2650
agri@chiefind.com
CHIEF INTERNATIONAL
Kearney, Nebraska
DISTRIBUTION CENTER
Atwood, Indiana
ENVIRONMENTAL PRODUCTS
Grand Island, Nebraska

CHIEF BUILDINGS
Grand Island, Nebraska
Rensselaer, Indiana
PH: 308-389-7281
FAX: 308-389-7282
buildings@chiefind.com
ARROWHEAD STEEL
Grand Island, Nebraska

CHIEF FABRICATION
Grand Island, Nebraska
PH: 308-389-2100
FAX: 308-385-3410
fabrication@chiefind.com
PIVOT WALKER
Grand Island, Nebraska
POWDER COAT FACILITY
Grand Island, Nebraska

CHIEF TRANSPORTATION PRODUCTS
Omaha, Nebraska
PH: 402-861-4213
FAX: 402-895-9674
chieftransportationproducts@chiefind.com

SUBSIDIARIES

CHIEF CARRIERS, INC.
Grand Island, Nebraska
PH: 308-389-7250
FAX: 308-389-7487
gicc@chiefind.com

CHIEF CONSTRUCTION COMPANY
Grand Island, Nebraska
PH: 308-389-7222
FAX: 308-389-7393
Kearney, Nebraska
PH: 308-238-2755
FAX: 308-238-2759
construction@chiefind.com
HEARTLAND ELECTRIC
Grand Island, Nebraska

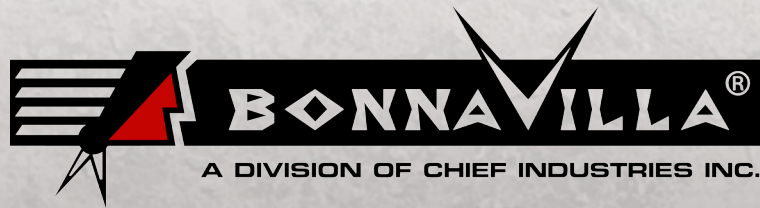
CHIEF ETHANOL FUELS, INC.
Hastings, Nebraska
PH: 402-463-6885
FAX: 402-462-9931
ethanol@chiefind.com

CHIEF INDUSTRIES UK LTD
Maldon, Essex, England
PH: 441-621-868944
FAX: 441-621-868955
info@chief.co.uk

EAGLE CREST HOMES, INC.
Grand Island, Nebraska
PH: 308-382-3866
FAX: 308-384-0162
eaglecrest.ne.grandisland@chiefind.com

PHENIX-ROUSIES INDUSTRIES, S.A.
Rousies, France
PH: 33-32769-4242
FAX: 33-32764-9585
phenix@chiefind.com

To find out more about our family businesses
go to www.chiefind.com



Non-Single Family

MODULAR HOMES



Since 1970, BonnaVilla® has been the name to trust for quality, well-built modular homes. We pride ourselves on the Chief Industries formula for success:

- Commitment to our customers
- Commitment to manufacturing excellence
- Commitment to strength and stability

You'll appreciate our attention to detail, and be thrilled with how your BonnaVilla® is built to fit your lifestyle.



We Engineer Relationships®

P.O. Box 127
111 Grant Street
Aurora, NE 68818
402-694-5250 PH • 308-389-6749 FAX
www.bonnavilla.com

