

SURVEY PLAT OF

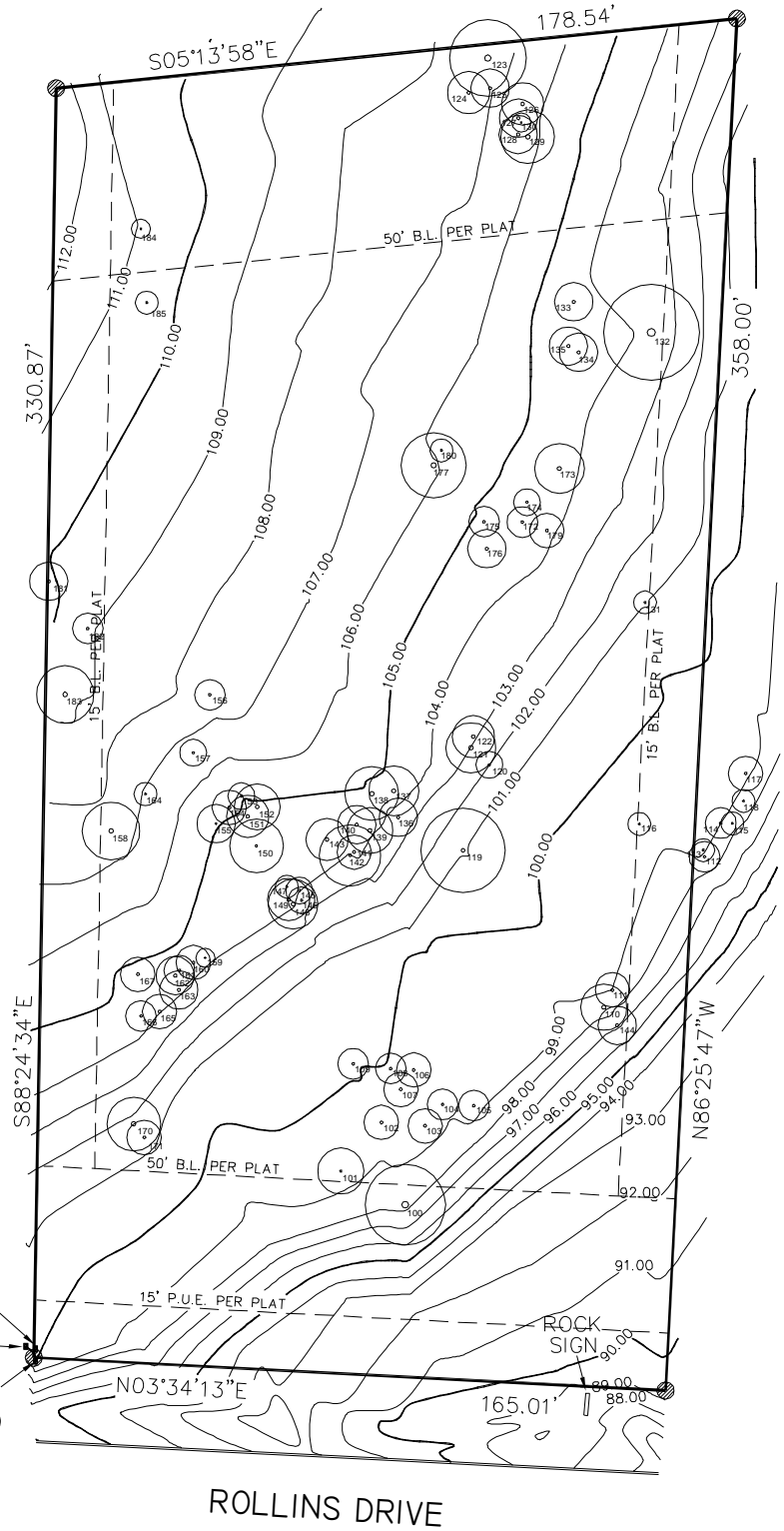
Local Address: 8701 ROLLINS DRIVE Re: _____
 Legal Description: Lot 2, Block B, BELVEDERE PHASE VII-A
 a Subdivision of record in Document No. 201300224, of the Travis County, Texas
 Plat Records, situated in Travis County Texas.



Scale 1 = 50'

- = Iron Pin Found
- = Iron Pin Set

| TAG | DESCRIPTION | TAG | DESCRIPTION |
|-----|-------------|-----|--------------|
| 100 | 21" OAK | 142 | 8" OAK |
| 101 | 6" OAK | 143 | 11" OAK |
| 102 | 9" OAK | 144 | 10" OAK |
| 103 | 9" OAK | 145 | 7" OAK |
| 104 | 8" OAK | 146 | 7" OAK |
| 105 | 8" OAK | 147 | 6" OAK |
| 106 | 9" OAK | 148 | 13" OAK |
| 107 | 9" OAK | 149 | 11" OAK |
| 108 | 8" OAK | 150 | 7" OAK |
| 109 | 8" OAK | 151 | 11" OAK |
| 110 | 12" OAK | 152 | 12" OAK |
| 111 | 9" OAK | 153 | 7" OAK |
| 112 | 8" OAK | 154 | 9" OAK |
| 113 | 6" OAK | 155 | 5" OAK |
| 114 | 8" OAK | 156 | 9" OAK |
| 115 | 6" OAK | 157 | 7" OAK |
| 116 | 6" OAK | 158 | 15" OAK |
| 117 | 11" OAK | 159 | 5" OAK |
| 118 | 6" OAK | 160 | 9" OAK |
| 119 | 11" OAK | 161 | 8" OAK |
| 120 | 7" OAK | 162 | 10" OAK |
| 121 | 13" OAK | 163 | 10" OAK |
| 122 | 11" OAK | 164 | 6" OAK |
| 123 | 20" TRIPLE | 165 | 9" OAK |
| 124 | 11" OAK | 166 | 8" OAK |
| 125 | 10" OAK | 167 | 9" OAK |
| 126 | 11" OAK | 170 | 14" OAK |
| 127 | 10" OAK | 171 | 9" OAK |
| 128 | 10" OAK | 172 | 8" OAK |
| 129 | 14" OAK | 173 | 13" OAK |
| 130 | 5" OAK | 174 | 7" OAK |
| 131 | 6" OAK | 175 | 8" OAK |
| 132 | 25" OAK | 176 | 10" OAK |
| 133 | 10" OAK | 177 | 17" TWIN OAK |
| 134 | 10" OAK | 178 | 7" OAK |
| 135 | 10" OAK | 179 | 9" OAK |
| 136 | 10" OAK | 180 | 6" OAK |
| 137 | 13" OAK | 181 | 10" OAK |
| 138 | 14" OAK | 182 | 8" OAK |
| 139 | 12" OAK | 183 | 15" OAK |
| 140 | 10" OAK | 184 | CLUSTER |
| 141 | 9" OAK | 185 | 6" OAK |



Dated, this the 11th day of FEBRUARY, 2014

Note: Survey was made without the Benefit of a Title Commitment.

Note: Property may be subject to other Esmts, Restrictions, and Building Lines Not Shown on Plat.

STEVE H BRYSON, R.P.L.S. NO. 4248
 STEVE H BRYSON SURVEYING CO.
 7525 Highway 71 West
 Austin, Texas 78735 (512) 288-2400
 Copyright 2014 Steve H. Bryson Surveying Company