



A DIVISION OF CHIEF INDUSTRIES, INC.

Expanded Living

The Details Make the Difference



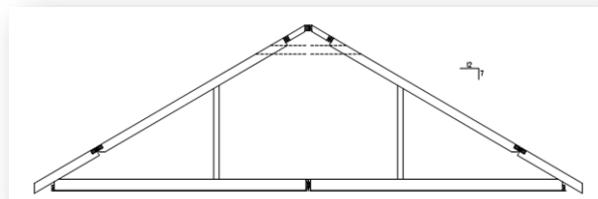
7/12 Storage & 9/12 Cape Option

- Hinged Attic Roof Truss in 7/12 or 9/12 Roof Pitch
- Unfinished Upper Level Space (Finish Materials Not Included)
- Stairwell to Upper Floor (Carpet Shipped Loose) w/ Door
- Rough-In Plumbing for (1) Upper Level Location (9/12)
- Insulated Floor (Ceiling of Lower Level)
- (1) Window Shipped Loose for Each End of Upper Level (Total of 2)

7-12 ATTIC STORAGE PACKAGE

This option has knee-wall and headroom, but the floor is loaded for attic storage, not living space.

1. Stairs with full or 1/2 wall going up— wall is insulated. Floor covering is not included.
2. Sealed door installed at the bottom of the stairs — or shipped loose for upper floor.
3. Sconce wall light and switch in stairwell.
4. Handrail in stairwell (shipped loose)
5. Insulated ceiling R-38 with batt insulation throughout. *No insulation for the rafters in the upstairs is included.*
6. Floor decking for useable floor space partially laid (one row each side) — balance shipped loose.
7. 2 – 3636 windows are shipped loose.
8. All materials to finish the gable ends are shipped loose.
9. Rafter ties and roof finish materials (underlay, shingles, etc.) are shipped loose.
10. Standard return air only – for lower level (with passive air grilles above doors). *Direct return air IS NOT AVAILABLE.*



27'4" Box = 8'10"

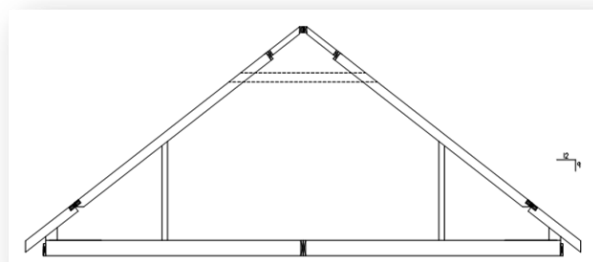
28'9" Box = 10'9"

29'8" Box = 11'3"

9-12 CAPE PACKAGE

This option has a knee-wall, headroom, and the floor is loaded for future living space.

1. Stairs with full or 1/2 wall going up— wall is insulated. Floor covering is not included.
2. Sealed door installed at the bottom of the stairs — or shipped loose for upper floor.
3. Sconce wall light and switch in stairwell.
4. Handrail in stairwell (shipped loose)
5. Insulated ceiling R-38 with batt insulation throughout. *No insulation for the rafters in the upstairs is included.*
6. Floor decking for useable floor space partially laid (one row each side) — balance shipped loose. *No finish materials for upper floor are included.*
7. 2 – 3660 windows are shipped loose.
8. All materials to finish the gable ends are shipped loose.
9. Rafter ties and roof finish materials (underlay, shingles, etc.) are shipped loose.
10. Rough-in capped hot and cold water lines to upper level.
11. Rough- in capped drain line to upper level.
12. Run (4) additional circuits to a junction box in the upper level. Box to be located in knee-wall area above EPB.
13. Rough-in HVAC supply capped in ceiling. Standard return air only – for lower level (with passive air grilles above doors). *Direct return air IS NOT AVAILABLE. No accommodation for upper level RA included.*
14. (1) Smoke Detector Circuit



27'4" Box = 14' 3"

28'9" Box = 15'8"

29'8" Box = 16'7"

****Optional window dormers are available in wall panel/material kit only (not pre-built)***