

Better Homes and Gardens Special Interest Publications.

Remodel

Ideas for Your Home

Big Ideas for
Small
Spaces

How This 12x14
Room Lives Large p.7

15 Real-Life
Storage
Solutions

p.26

December 2009/January 2010

Display until January 5

\$5.99 U.S.



RemodelingCenter.com

BHG SIP Blue Checkout

Plan the Perfect Kitchen p.34
Fireplace Makeovers Under \$600 p.21
Best Bath Innovations p.11

**SMALL
SPACE
LIVING**



In the kitchen, classic white cabinets, marble counters, and a wood island top suit the home's 1920s roots.



Growing Gracefully

A SMARTLY SCALED ADDITION PROMOTES FAMILY TOGETHERNESS BY OFFERING OPEN, HARDWORKING SPACES THAT BLEND WITH THE REST OF THE MODEST 1920s HOME.

WRITTEN BY NANCY A. RUHLING
PHOTOGRAPHS BY TRIA GIOVAN
PRODUCED BY CYNTHIA BOGART



Larry and Susan LeHan had more than enough room for their family of three when they bought a charming 1920s Tudor Colonial in Fairfield County, Connecticut.

But as the size of their family grew to five, the 1,800-square-foot, three-bedroom home turned from comfortable to cramped. The couple didn't really want to move—the house backs to a 100-acre woodland park—and they didn't want to alter the front exterior or eliminate the porte cochere on the side. The home's half-acre lot, deep and narrow, seemed to limit remodeling options.

Architect Louise Brooks found a solution, designing a two-story, 1,200-square-foot addition to the back of the home. Brooks made the vintage dwelling live for a modern family by turning the rooms into gathering spots. "The layout eliminates isolation," she says.

At the same time, the addition conveys the intimacy and scale of the home's original rooms. "We didn't want to add only a family room," Susan says. "It was important for us to use the whole house. The addition is not just one big room; it's lots of little areas that are quirky, functional, and look as though they were placed there over time."

The family room, for instance, is the perfect space for grown-ups and kids to hang out together. The children do their homework on the computer at the built-in desk, and

ABOVE LEFT: A stand-up desk and message center is conveniently built into a kitchen nook that family members pass on their way in and out of the home.

ABOVE RIGHT: The new kitchen includes a spacious eating area where the family can dine casually. The doorway on the left leads to the new family room.

OPPOSITE: The mudroom occupies part of the old kitchen. Hooks, shelves, and a lift-up bench provide storage. Homeowner Susan LeHan stenciled the wood floor to add color.

SMALL SPACE SOLUTION 07

OPEN UP FOR EFFICIENCY: Take a cue from this home, where rooms on the main level open to one another, easing traffic flow and wasting no space on hallways. "This is a very efficient solution," architect Louise Brooks says. "And it makes every room usable because you have to walk through one to get to the next."



MULLING A MUDROOM?

A well-planned mudroom should be easy to use and maintain. Location is everything: The space should be on the way in and out of your home's most-used entry. If you have to go out of your way to use a mudroom, you probably won't. It doesn't have to be off the kitchen, but that's often the best spot.

You don't need a lot of square footage for a mudroom, either. Just 6 feet along one wall is enough for a bench and a few rows or columns of cubbies or cabinets. However, the smaller your mudroom, the more important it is to use vertical space, keeping storage close to the wall and extending it toward the ceiling.

Because a mudroom tends to live up to its name, the best flooring choices are stone or ceramic tile—surfaces that can take a lot of wear and tear, as well as water, dirt, sand, and salt. Use wainscoting to protect walls, or paint in a washable finish.



when they're done, the family plays board games that store in the drawers of the window seats. On nice days, everyone goes out the French doors to the new back patio. "I can see the kids playing in the yard when I'm in the family room," Susan says. "And when company comes, we can pick up all the toys in a couple of minutes and turn it into an adult space."

Upstairs, the new master suite is close to the children's rooms, giving everyone a snug sense of security. In the kitchen, where every cabinet was assigned a purpose and label, all is hidden yet accessible. Small appliances are housed in garages, and the island provides select storage space.

Inside and outside, the new and old are a perfect pairing. "Every room works and lives better than before," Susan says. "When you move from the old to the new, you can't tell the difference between the two."

RESOURCES ON PAGE 112

ABOVE: Bright, colorful, and full of built-in storage, the family room invites all to gather and relax in comfort. French doors open to a patio, while a desk tucks into a corner.

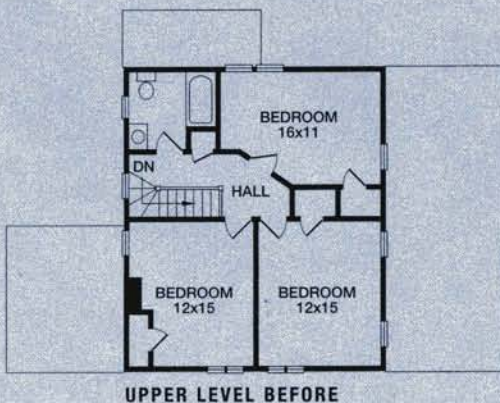
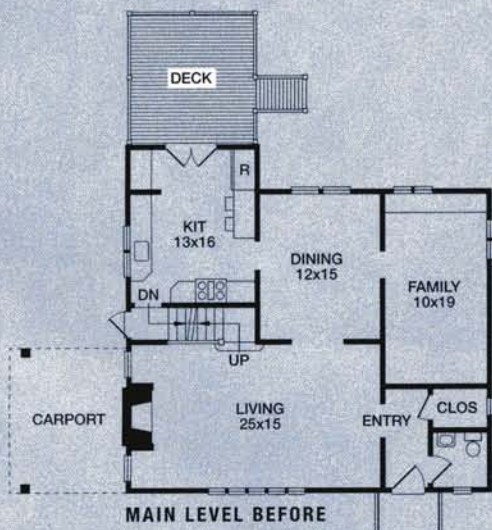
LEFT: The two-story addition fits the home's narrow lot and Tudor Colonial architecture. The new family room—directly below the new master suite—opens to a stone patio.

THE CHANGE

A two-story addition on the back of a 1920s home gives a growing family the space they need while maintaining the character and proportions of the existing structure.

WHAT IT TOOK

- * Expanding the kitchen to make room for an island and a spacious eating area.
- * Converting part of the old kitchen into a mudroom to provide a much-needed storage and transition space at the side entry.
- * Locating the new family room off the kitchen to create logical flow for entertaining and everyday living.
- * Reconfiguring the formal dining room to improve its connections to the living room and kitchen.
- * Replacing a wood deck with a flagstone patio that's accessible from the family room, and adding a small grilling porch off the kitchen eating area to strengthen indoor-outdoor bonds.
- * Adding a master suite to the upper level to boost family bedroom and bathroom space—and to give a couple with three children a private retreat.



□ CHANGE ■ ADDITION



Pretty and Petite Pages 78–83

Designer: Jean-Francois Menard, Atelier Auguste, Westmount, Quebec; 514/485-1920.

Builder: Segabo Design, 1734 Berlier, Laval, Quebec H7L 4A1; 450/686-5973.

Cabinetry—Segabo Design, Laval, Quebec; 450/686-5973. **Cabinet hardware**—Lee Valley Tools, Ltd.; in the United States: 800/871-8158; in Canada: 800/267-8767; leevalley.com. **Countertop** antique brown marble—Ciot, Montreal; 514/382-7330; ciot.com. **Sink**—Franke; 800/625-5771; franke.com. **Faucet**—Perrin & Rowe, presented by Rohl; 800/777-9762; rohlhome.com. **Range**—Jenn-Air; 800/688-1100; jennair.com. **Refrigerator**—Fisher & Paykel Appliances, Inc.; 888/936-7872; usa.fisherpaykel.com. **Vent hood**—Faber; 508/358-5353; faberonline.com. **Table, chairs**—Pier 1 Imports; 800/245-4595; pier1.com. **Floor tile, backsplash tiles**—Ardesia Carreaux, Montreal; 514/733-9925. **Fabrication of banquette cushions**—Neander 1951, Inc., Montreal; 514/322-6885. **Fabric for banquette, fabric for pillows**—Chintz & Collections, Westmount, Quebec; 514/731-6765. **Chandelier at table**—Celadon Collection, Montreal; 514/932-3306; celadoncollection.com. **Doors, windows**—Marvin Windows and Doors; 888/537-8268; marvin.com. **Dishes, towels, glass carafes, pewter tray, ivory porcelain coffee set, chrome basket**—Arthur Quentin, Montreal; 514/843-7513. **Pendant light at window**—Quelques Choses, Montreal; 514/486-3155.



Growing Gracefully Pages 84–89

Architecture firm: Louise Brooks, principal, designer, and Vincent J. Falotico, AIA, Brooks & Falotico Associates, Inc., 199 Elm St., New Canaan, CT 06840; 203/966-8440; brooksandfalotico.com.

Interior designer: Petra Roberts, Boxwood Interiors, 1 McKinley St., Norwalk, CT 06853; 203/956-9882.

Builder: Fox Hill Builders, 1921 Post Rd., Darien, CT 06820; 203/655-9046; foxhillbuilders.com.

Pages 84–85

Cabinetry—Queen Anne Woodworking, LLC, Naugatuck, Connecticut; 203/720-1781. **Refrigerator**—Jenn-Air; 800/688-1100; jennair.com. **Stove**—Wolf Appliance Co., LLC; 800/332-9513; wolfappliance.com. **Faucet**—Kohler Co.; 800/456-4537; kohler.com. **Stools**—Pottery Barn; 800/922-5507; potterybarn.com (product line varies).

Pages 86–87

Table—ABC Carpet & Home, New York City; 212/473-3000; abchome.com. **Pillows in window seats**—Good Food Good Things, Darien, Connecticut; 203/655-7355; goodfoodgoodthings.net. **Chandelier**—Boxwood Interiors, Rowayton, Connecticut; 203/956-9882. **Sconces**—Restoration Hardware; 800/910-9836; restorationhardware.com.

Page 88

Rug—Rafael Osona, Nantucket, Massachusetts; 508/228-3942; rafaelosonauction.com. **Sofa** Oakdale in black, **red chairs**—Ralph Lauren Home; 888/475-7674; ralphlaurenhome.com (product line varies). **Fabric for sofa pillows**—Groundworks, available through Lee Jofa; 800/453-3563; leejofa.com [T]. **Fabric for drapery** Deerfield Plaid—Brunschwig & Fils; 800/538-1880; brunschwig.com [T]. **Fabrication of drapery**—through Boxwood Interiors, Rowayton, Connecticut; 203/956-9882.