

The Ellsworth . . . 1,958 Sq. Ft.



Traditional Style



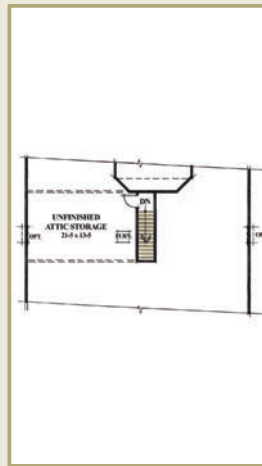
Cottage Style



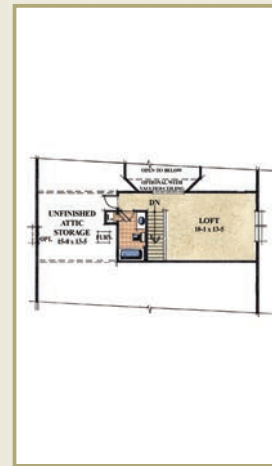
European Style



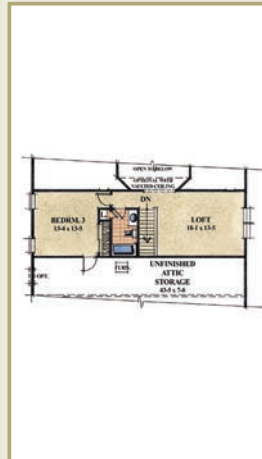
Main Floor - 1,958 sq.ft.



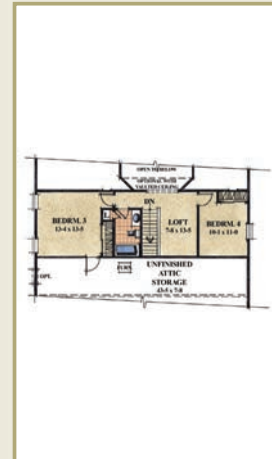
Second Floor Standard



Second Floor Option 1 - 348 sq.ft.



Second Floor Option 2 - 568 sq.ft.



Second Floor Option 3 - 568 sq.ft.

The Ellsworth features two bedrooms, including a large Master Suite, and two full baths on the first floor as well as a private first floor Study, and a formal Dining Room with optional tray ceiling. The kitchen displays an expansive two-tier island that opens to a breakfast nook and a spacious Great Room with an optional vaulted ceiling. The second floor provides plentiful storage with options to expand to additional bedrooms, bath and/or loft area.

