

Gerard Stone-Coated Metal Roofing Systems



The Last Roof Your Home Will Ever Need



Choose Strength. Choose Gerard.

BARREL VAULT



Barcelona

Barrel Vault Stock Colors:



Barcelona



Cyprus



Santa Fe



Sunset Gold



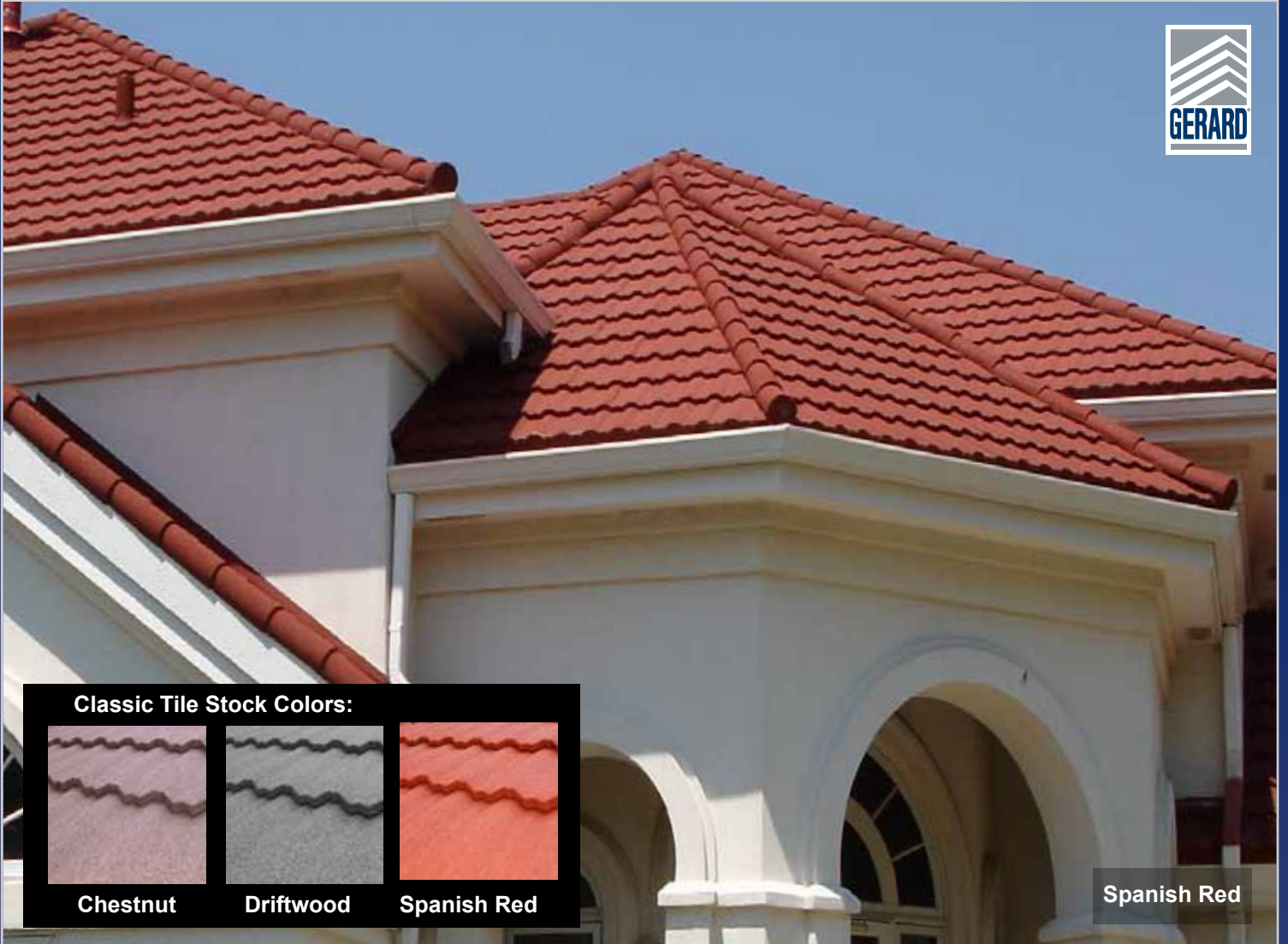
Cyprus



Sunset Gold

Call Today For Your Free Estimate 1-800-23-ROOFS

CLASSIC TILE



Spanish Red

Classic Tile Stock Colors:



Chestnut



Driftwood



Spanish Red



Driftwood



Chestnut

Visit Us Today At www.GerardUSA.com

CANYON SHAKE



Country Blend

Canyon Shake Stock Colors:



Barclay



Country Blend



English Suede



Timberwood



Windsor



Timberwood



Windsor

Call Today For Your Free Estimate 1-800-23-ROOFS

GRANITE RIDGE



Granite Ridge Stock Colors:



Barclay



Timberwood

Barclay



Timberwood

Visit Us Today At www.GerardUSA.com

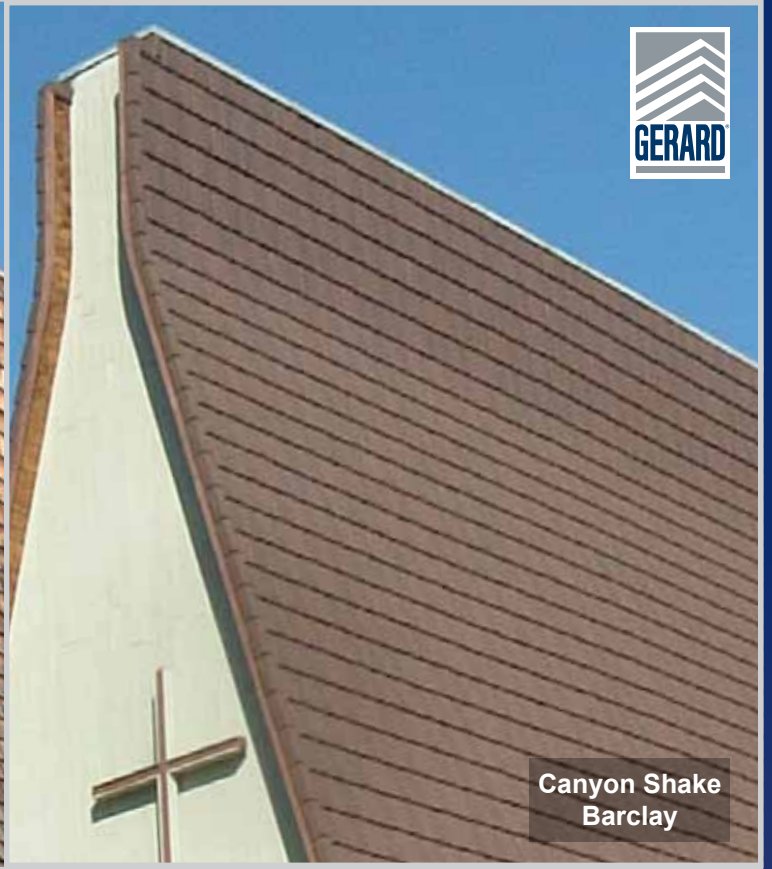
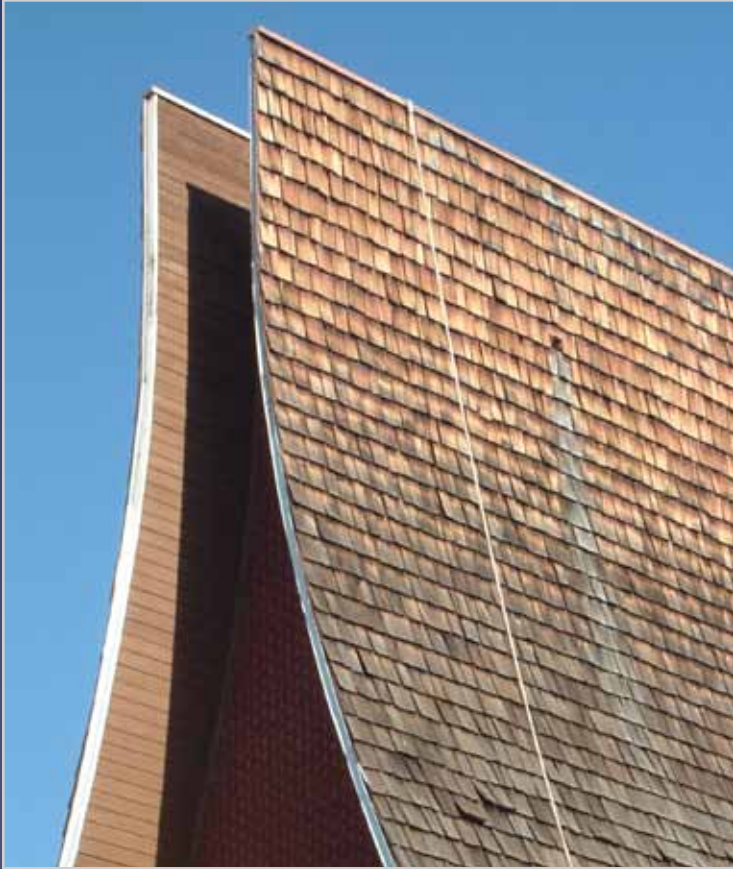
BEFORE & AFTER



Tile/Barcelona

Call Today For Your Free Estimate 1-800-23-ROOFS

BEFORE & AFTER



Canyon Shake
Barclay



Tile/Cyprus

Visit Us Today At www.GerardUSA.com

Why Gerard?

FIRE Gerard's patented interlocking fastening system prevents the panels from lifting and allowing blowing embers to ignite the roof deck. Gerard comes with a UL 790 Class "A" Fire rating (highest rating in the industry).

HAIL Gerard comes with a 2.5" hail warranty and is UL 2218 Class 4 rated (highest rating in the industry).

WIND Gerard's interlocking panels have withstood 170 mph wind tests and come with a 120 mph warranty.

EARTHQUAKE Gerard's superior features reduce the threat of roof collapse. In a survey, the McMullen Company found only minor damage to 1% of homes protected by stone-coated metal roofing. In contrast, more than 50% of the homes with concrete and clay roofs had significant damage.

WEATHERING Gerard roof panels will not split, crack, break, curl, warp or absorb water. The stone granules are UV-reflective and provide protection against the elements.

LIGHTWEIGHT At only 1.4 lbs per square foot, structures do not need re-engineering to accommodate the Gerard system.

ENVIRONMENT Gerard's products are 100% recyclable. They also contain over 30% recycled content. Rest assured Gerard is doing their part to conserve our natural resources.

INSURANCE DISCOUNTS In many areas where weather damage is prevalent, insurance companies offer substantial premium reductions to homeowners with a Gerard roof.

APPEARANCE Gerard's product line has the premium presentation discriminating homeowners are seeking.

RESALE According to the *Residential Cost Handbook*, home values increase \$1.35/ sq. ft. with metal roofs vs. wood shake or asphalt composition.

MAINTENANCE Gerard is virtually a maintenance free product.



Call Today For Your Free Estimate 1-800-23-ROOFS

Fire

Class "A" Fire Rating - Industry's Highest Rating

Steel Does Not Burn.



A Gerard Roof Is The Best Protection For Your Largest Investment.



Gerard's Interlocking Panels Protect Homes From Wind-Blown Embers.



Visit Us Today At www.GerardUSA.com



Hail

Class 4 Impact Rating - 2.5" Hail Warranty



F3 Tornado - Mena, Arkansas - April 2009 - 160 mph Winds



← **600 Feet Away**



← **Two City Blocks Away**

Home With Gerard Roofing
Property Damage: \$10,240
Roof Damage: \$10

Call Today For Your Free Estimate 1-800-23-ROOFS

Wind

120 mph Wind Warranty



3 Hurricanes
1 Tropical Storm
1 Gerard Roof

Tested at 170 mph - Did Not Sustain Damage



Gerard - No Damage

Asphalt - Total Loss



Before Ivan



After Ivan

Visit Us Today At www.GerardUSA.com

Green Sheet

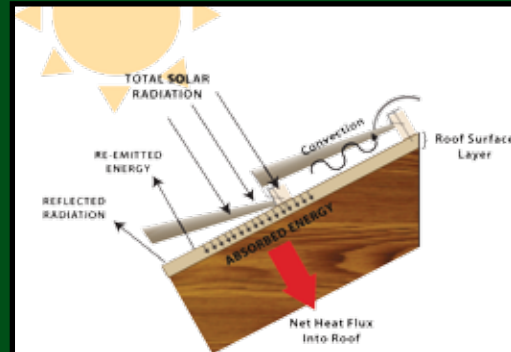


Heat Gain Reduction

The Gerard Stone-Coated Steel Roofing System reduces heat gain by as much as 45% over conventional asphalt roofing systems. Gerard uses highly UV-reflective granite stone chips which are sealed to the tough Zinc-Aluminum steel substrate. The Gerard system allows air to pass between the deck and the panels. When air convection is combined with the highly reflective Gerard steel and stone roofing, the result is one of the most energy efficient and eco-friendly roofing systems in the world.

GERARD'S GREEN SHEET

1. Made with over 30% recycled steel
2. Uses 100% recyclable steel
3. Recycles the majority of their waste
4. California Title 24 compliant
5. Qualifies for LEED credits
6. Purchases packaging from vendors who recycle



6-15-2009

Subject: Fwd: my roof
Hi Matt,

Hope all is well. Today while working in the yard I realized that my gable fan wasn't running. It was 92 degrees outside and I knew that the attic temperature had to be at least 120 degrees. Since my attic fan automatically turns on when the temperature reaches 105 so I went into my attic to see what was wrong. I couldn't believe it. The attic was only 94 degrees! Two degrees warmer than outside with a bright sun. I've seen it with my own eyes. The new roof you installed is going to cut my A/C bill way down. Plus we have received several compliments on the appearance of our home. We are so pleased and had to let you know. Thanks a lot.

Jim & Micki Kuchenbaker
(Atlanta, Georgia)

8-17-2008

Hi Rick

In the summer when I only had one side of the garage roof finished with the Gerard roof the other side only had tar paper and battens, so I went in the attic with a digital laser thermometer. I pointed it at the finished side (stone-coated steel) the temperature was 90 degrees, the other side was 116 degrees that is 26 degrees cooler. You were absolutely right about how energy efficient Energy-Loc is. See the pictures. P.S.: The roof looks great. I will send more photos later.

Russell Potosky (Manchester Township, New Jersey)



10-23-2003

This past year I installed the Gerard Roofing System on my home using counter battens with ridge vents. It was installed directly over my existing asphalt roof. I didn't change anything but my roof and my utilities dropped 30%. Amazing.

Tony Pflug (Omaha, Nebraska)

Call Today For Your Free Estimate 1-800-23-ROOFS

Comparison Chart

Protection & Benefits	 GERARD	Concrete	Resin Composites (Plastic/Rubber)	Asphalt	Wood Shake
Weight	Excellent 1.4 lbs./sq. ft	Poor 9-15 lbs./sq. ft	Fair 6 lbs./sq. ft	Fair 3-4 lbs./sq. ft	Fair 3-5 lbs./sq. ft
Fire	Excellent Class "A" Fire Rating	Poor Roofs Collapse from Weight	Poor Majority are Class "C" Rated	Fair	Poor Wood Burns
Wind	Excellent High Test Rating. Over 155 mph Winds	Poor Requires Special Installation to Meet High Wind Requirements	Poor Most Manufacturers Don't Offer Wind Warranties	Poor Most Wind Warranties Are Valid for 5 Years	Poor No Wind Warranty
Hail	Excellent 2.5" Hail Warranty	Fair Crack & Break	Good	Poor	Poor
Snow & Ice	Excellent Interlocking Design is Strong & Resists Ice Damming	Poor Breaks from Freeze/Thaw and Weight of Ice/Snow	Fair Breaks from Freeze/Thaw and Weight of Ice/Snow	Poor Ice Removes the Protective Granules	Good
Earthquakes	Excellent Lightweight + Added Sheer Strength	Poor	Good	Good	Good
Weather Warranty	Excellent Limited Lifetime Warranty	Fair No Appearance Warranty	Fair No Warranty for Color Fade	Fair Pro-Rated Warranty	Poor No Warranty
Environment	Excellent Recyclable	Fair	Fair	Poor	Fair
Re-Sale	Excellent Increases Curb Appeal & Looks Great	Good	Fair	Fair	Fair

Ratings based on comparison with Gerard as determined from manufacturer's specification, independent testing laboratories and published industry studies and statistics.

**Requires additional nails, clips, and/or details in high wind areas.

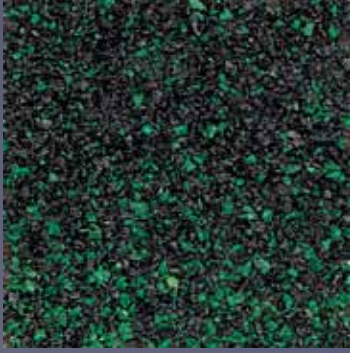


Allowing **hot air** to escape substantially reduces heat gain.
The Batten System allows free air to pass between the roof deck and metal panels.

Visit Us Today At www.GerardUSA.com



Standard Gerard Colors



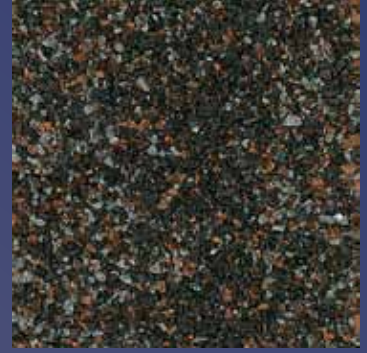
Devonshire



Midnight Blue



Windsor



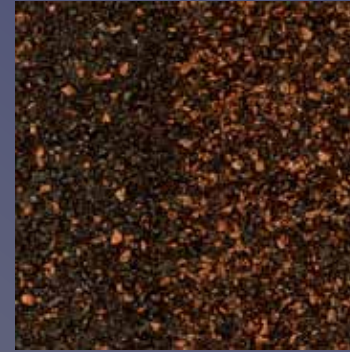
Timberwood



Country Blend



Chestnut



Barclay



English Suede



Desert Sand



Driftwood



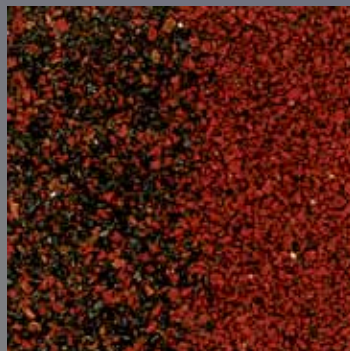
Santa Fe



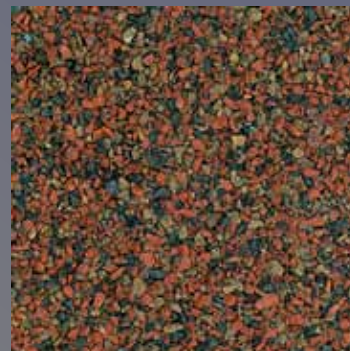
Sunset Gold



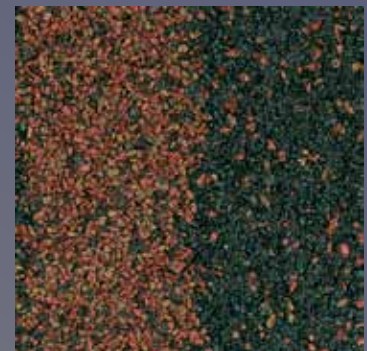
Spanish Red



Barcelona



Terracotta



Cyprus

Note: Printed swatches have a slight color variance than the actual panel color.

Expect an 8 to 10 week lead time and an up-charge for Energy Star colors

Call Today For Your Free Estimate 1-800-23-ROOFS

Any Color on Any Profile

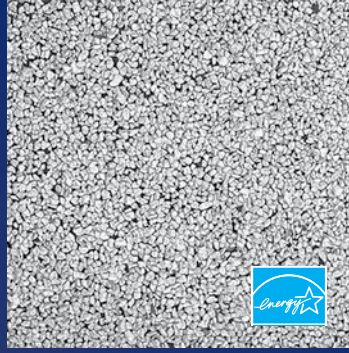
Non-Stock Color/Profile Combinations Require Additional Lead Times



Charcoal



Midnight Steel



Dover



Aspen



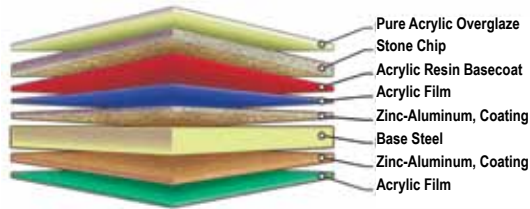
Visit Us Today At www.GerardUSA.com

America's #1 Storm Proof Roof



Tile/Devonshire

Material Breakdown



Metals USA and Gerard Roofing assume no liability for the incorrect installation of its products, and encourage consumers to use their own independent judgment to select a reputable installer in their area who will provide references and a written warranty of workmanship and installation. The liability of Metals USA and Gerard Roofing is limited exclusively to the terms and conditions of Gerard's written lifetime limited warranty, which is available for review prior to any purchase of Gerard products.

Certification

Gerard roofing products have been appraised, and have received appraisal certificates and approvals as follows. Test report copies are available on written request.

Classified to the following:

NES/NER National Evaluation Report No. 423

Acceptances

Los Angeles, California, Research Report No. RR-24432
 Dade County, Florida, Report No. 01-0605.01

TDI Approval

Memberships

MRA, Metal Roofing Alliance
 The New Steel
 Metal Construction Association
 National Roofing Contractors Association
 National Association Home Builders

Gerard Roofing
 955 Columbia Street
 Brea, CA 92821-2923
 (714)529-0407 or (800)23-ROOFS
gerardusa.com



1/2010 printing