

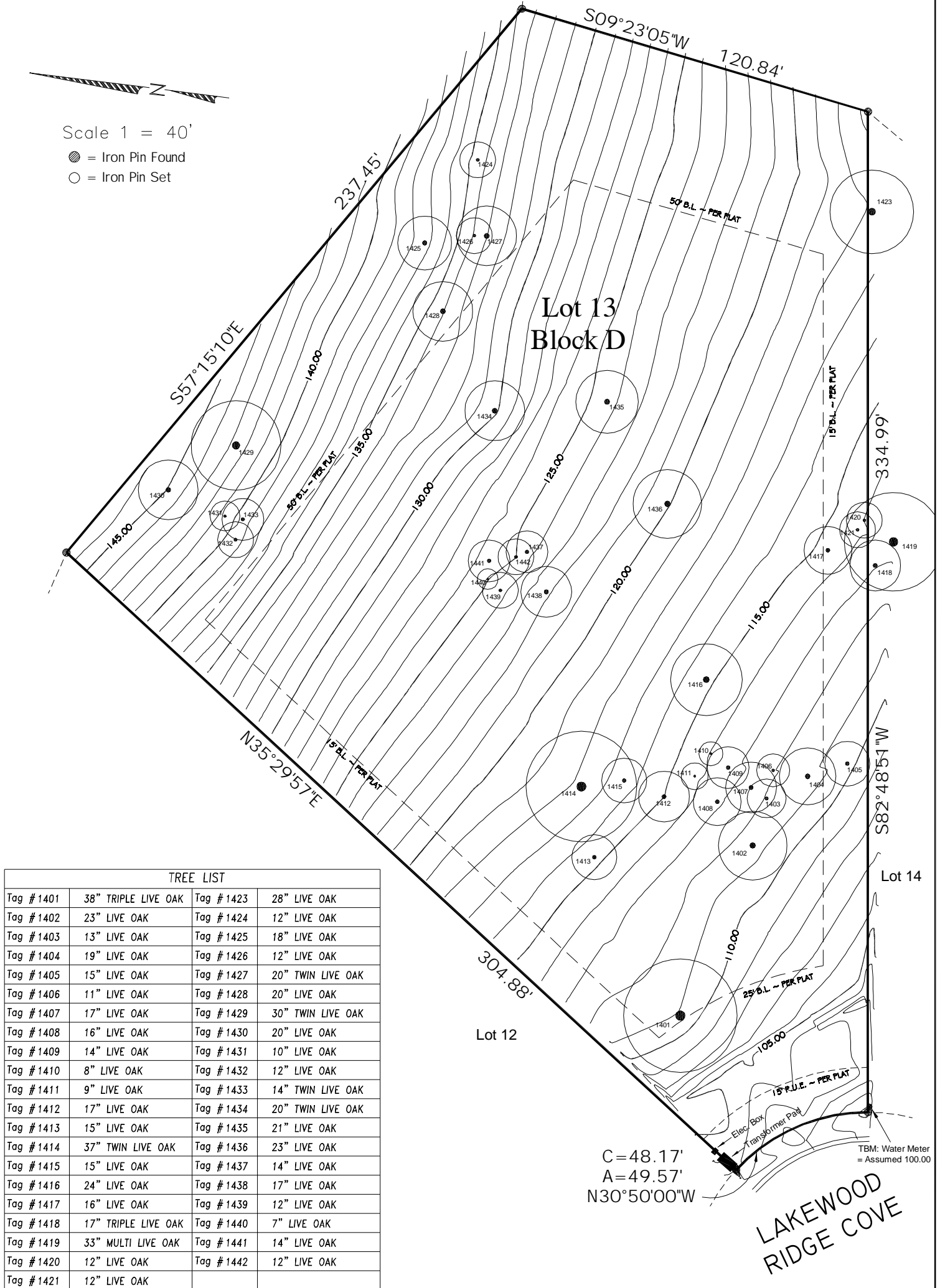
SURVEY PLAT OF

Local Address: 8301 Lakewood Ridge Cove Re: _____
 Legal Description: Lot 13, Block D, BELVEDERE PHASE VI
 a Subdivision of record in Document No. 201300082, of the Travis County, Texas
 Plat Records, situated in Travis County Texas.



Scale 1 = 40'

- = Iron Pin Found
- = Iron Pin Set



TREE LIST			
Tag # 1401	38" TRIPLE LIVE OAK	Tag # 1423	28" LIVE OAK
Tag # 1402	23" LIVE OAK	Tag # 1424	12" LIVE OAK
Tag # 1403	13" LIVE OAK	Tag # 1425	18" LIVE OAK
Tag # 1404	19" LIVE OAK	Tag # 1426	12" LIVE OAK
Tag # 1405	15" LIVE OAK	Tag # 1427	20" TWIN LIVE OAK
Tag # 1406	11" LIVE OAK	Tag # 1428	20" LIVE OAK
Tag # 1407	17" LIVE OAK	Tag # 1429	30" TWIN LIVE OAK
Tag # 1408	16" LIVE OAK	Tag # 1430	20" LIVE OAK
Tag # 1409	14" LIVE OAK	Tag # 1431	10" LIVE OAK
Tag # 1410	8" LIVE OAK	Tag # 1432	12" LIVE OAK
Tag # 1411	9" LIVE OAK	Tag # 1433	14" TWIN LIVE OAK
Tag # 1412	17" LIVE OAK	Tag # 1434	20" TWIN LIVE OAK
Tag # 1413	15" LIVE OAK	Tag # 1435	21" LIVE OAK
Tag # 1414	37" TWIN LIVE OAK	Tag # 1436	23" LIVE OAK
Tag # 1415	15" LIVE OAK	Tag # 1437	14" LIVE OAK
Tag # 1416	24" LIVE OAK	Tag # 1438	17" LIVE OAK
Tag # 1417	16" LIVE OAK	Tag # 1439	12" LIVE OAK
Tag # 1418	17" TRIPLE LIVE OAK	Tag # 1440	7" LIVE OAK
Tag # 1419	33" MULTI LIVE OAK	Tag # 1441	14" LIVE OAK
Tag # 1420	12" LIVE OAK	Tag # 1442	12" LIVE OAK
Tag # 1421	12" LIVE OAK		

Dated, this the 29th day of JANUARY, 2014

STEVE H BRYSON, R.P.L.S. NO. 4248
 STEVE H BRYSON SURVEYING CO.
 7525 Highway 71 West
 Austin, Texas 78735 (512) 288-2400
 Copyright 2014 Steve H. Bryson Surveying Company

Note: Survey was made without the Benefit of a Title Commitment.

Note: Property may be subject to other Esmts, Restrictions, and Building Lines Not Shown on Plat.