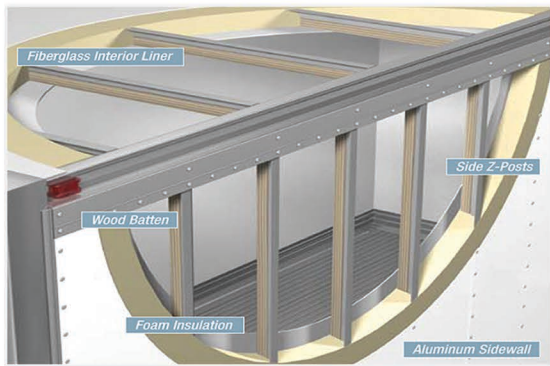




Refrigerated Truck Bodies - Aluminum



RELIABLE climate control is CRITICAL when your product is on the line. That's why every Morgan refrigerated body is engineered to include active AND passive design features to support proper operation of your refrigeration system, and mitigate heat transfer.



Strategically placed grab handles and a variety of service step configurations provide easy access to the service platform, and lend to a safer work environment.

STANDARD FEATURES

SUBFRAME - 3" I-beam Crossmembers 12" Centers 3" Structural Longrail, Mylar Tape Is Applied Between All Steel Subframe Components And Extruded Aluminum Lower Bottom Rails To Prevent Corrosion

FLOOR - Aluminum Extruded Hat-smooth With 6" Scuff 1

THRESHOLD - Stainless Flush To Rear With Thermobreak And Composite Buildup

REAR DOOR - Whiting Tempguard

Rear Frame - Stainless Steel, Including Built-in Header Design, Clearance Light Protector And Rain Deflector - Curbside And Roadside Grab Handles

ROOF - .032" One Piece Aluminum Sheet With Anti-sag Roof Bows On 24" Centers, With Crowded Rood Design, Which Helps Prevent Water/Ice Pooling

SKINS - .040" Aluminum Prepainted White

SIDE WALL - Extruded Aluminum Top And Bottom Rails With 1 3/8 In. Deep Extruded Aluminum Z-shaped Vertical Posts Installed On 16 In. Centers

SCUFF - 3" With Hat Floor

INSULATION - Urethane Foam-
Front 4" / Side 3" / Ceiling 3" / Floor 4" / Rear 3"

INTERIOR LINER - USDA Approved Seamless Glassboard

FRONT END - Aerodynamic Design, With Patented Poly-tuff Corner Caps, Plastic Refrigerated Dormer And Folding Steps And Grab Handle Mounted On Front Radius

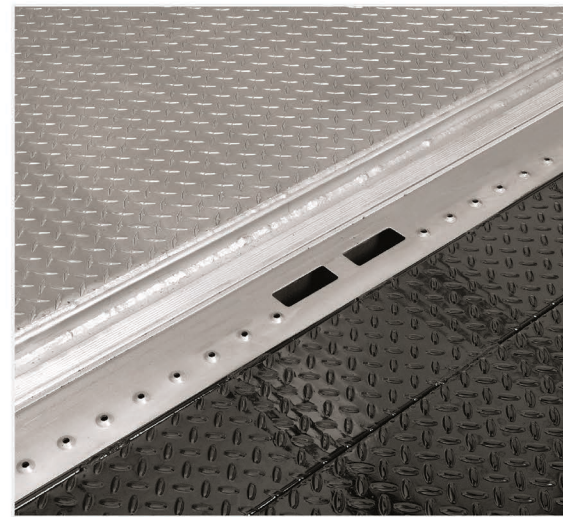
BUMPER - 5" Structural Bumper With Pooched Surface And Closure Plate

INTERIOR LIGHTING - (1) dome With Switch In Cab Without Loom

EXTERIOR LIGHTING - Led Sealed Clearance Lights, Per Fmvss-108

MOUNTING - Full Mount-u Bolt

MUDFLAPS - Morgan 24" X 36" Black



Morgan's exclusive full-perimeter thermal breaks on doors and thresholds reduce outside heat from reaching inside cargo, add-in our slip-resistant, rear door threshold and you have safe and efficient cargo area.



Refrigerated Body's floor is fully insulated using Morgan's poured-in-place polyurethane foam process to ensure consistent density and equal insulation across the entire floor.

*Optional equipment shown.



Cargo Interior Shown with E-track

OPTIONS

Morgan Refrigerated truck bodies are already the best built and equipped in the industry. But you can further enhance their performance with a wide range of options. From bumpers, cargo-restraint systems and doors, to liners, liftgates and much more, trust Morgan to exceed your highest expectations.

- 4" and 5" insulation packages available
- Walkramps
- Liftgates
- Refrigeration unit and installation
- Cargo restraint systems
- Strip curtains
- Bulkheads - permanent or moveable
- Side and rear door options
- Various flooring options
- Custom paint and decal installation
- Various lighting options
- Galvannealed rear frame
- Multi-temperature applications
- Custom side door steps
- Customized rear bumpers
- Shelving and rack systems
- Various scuff plate options
- Maximizer swing side door

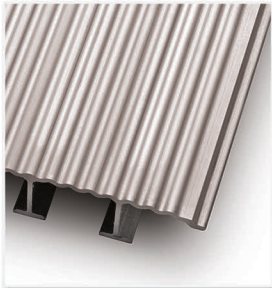
Options That Set the Standard



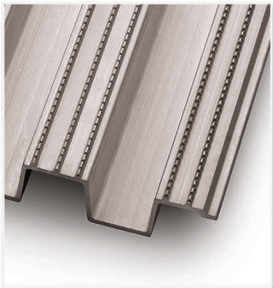
Cargo Interior Shown With E-track, Bulkhead/Multi-Temp Configuration and Strip-Curtain



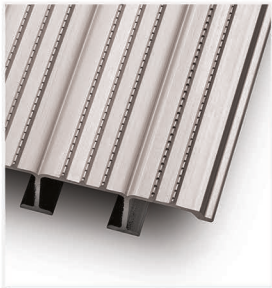
1 1/4" Aluminum (Hat) Floor



1 1/4" Aluminum (Inverted T) Ribbed Floor



1 1/4" Aluminum (Hat) Floor with Anti-Skid Surface



1 1/4" Aluminum (Inverted T) Anti-Skid Floor



Perhaps The Only Thing More Frustrating Than Having To Service Your Refrigeration Equipment Is Not Being Able To Access It Easily! Morgan's Body-or-cab-mounted (shown) Service Platforms Make It Easier (and Safer) To Maintain Your Refrigeration Unit

Specifications - Refrigerated Aluminum

LENGTH DIMENSIONS										
NOMINAL LENGTH	10	12	14	16	18	20	22	24	26	28
"K"	10' 5-5/8"	12' 5-5/8"	14' 5-5/8"	16' 5-5/8"	18' 5-5/8"	20' 5-5/8"	22' 5-5/8"	24' 5-5/8"	26' 5-5/8"	28' 5-5/8"
"L" - O/H ⁴	9' 7"	11' 7"	13' 7"	15' 7"	17' 7"	19' 7"	21' 7"	23' 7"	25' 7"	27' 7"
"L" - PANEL DOORS ⁵	9' 10"	11' 10"	13' 10"	15' 10"	17' 10"	19' 10"	21' 10"	23' 10"	25' 10"	27' 10"

Notes: 4.) O/H Door Dimensions Are For A Single Insulated Door. Subtract 1" For Double Insulated Doors.

5.) Panel Door Dimensions Are For 3" Thick Foam Doors. Subtract 1" for 4" Foam Doors, 2" For 5" Foam Doors.

"E" - REAR DOOR OPENING WIDTH				
EXTERIOR BODY WIDTH	O/H DOOR		SWING PANEL DOORS ⁷	
	1.38", 3", 4" SIDE FOAM	5" SIDE FOAM	2, 3, OR 4 - PANEL FULL OPENING	1 OR 2 PANEL NARROW OPENING
90	76"	74"	82"	43-3/4"
96	82"	80"	88"	43-3/4"
102	88"	86"	94"	43-3/4"

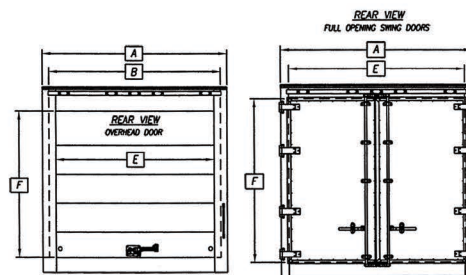
6.) Rear Door Opening Height Is Based On Standard 4" Floor Foam. Subtract 1" for 5" Floor Foam. Add 3-3/8" For Foam Between Sills.

7.) Side Wall Foam Thickness Does Not Affect Swing Panel Door Opening Width.

SIDE DOOR DIMENSIONS						
"H" - SIDE DOOR HEIGHT						"G" SIDE DOOR WIDTH
SIDE DOOR	BODY HEIGHT					
	79	85	91	97	103	
STD. HEIGHT	66-7/8"	72-7/8"	72-7/8"	72-7/8"	72-7/8"	36-1/16"
FULL HEIGHT	66-7/8"	72-7/8"	78-7/8"	84-7/8"	90-7/8"	36-1/16"

WIDTH DIMENSIONS					
EXTERIOR BODY WIDTH	"A"	"B" ¹			
		1.38" FOAM	3" FOAM	4" FOAM	5" FOAM
90	90"	86-3/16"	83-3/16"	81-3/16"	79-3/16"
96	96"	92-3/16"	89-3/16"	87-3/16"	85-3/16"
102	102"	98-3/16"	95-3/16"	93-3/16"	91-3/16"

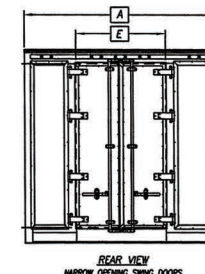
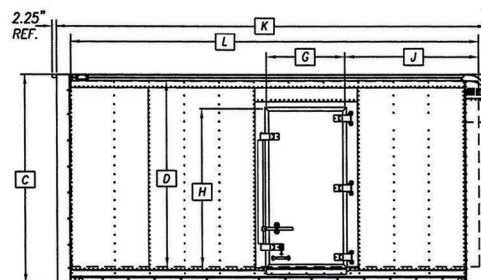
1.) Interior Width Dimension Is From Scuff To Scuff.



HEIGHT DIMENSIONS				
BODY HEIGHT	"C" ²	"D" ³		
		3" FOAM	4" FOAM	5" FOAM
79	85-3/8"	74.00"	73.00"	72.00"
85	91-3/8"	80.00"	79.00"	78.00"
91	97-3/8"	86.00"	85.00"	84.00"
97	103-3/8"	92.00"	91.00"	90.00"
103	109-3/8"	98.00"	97.00"	96.00"

2.) Exterior Height Does Not Include Longitudinals

3.) Interior Height Is Based On Standard 4" Floor Foam. Subtract 1" For 5" Floor Foam. Add 3-9/16" For Foam Between Sills.



CALCULATED WEIGHT CHART

BODY HEIGHT	BODY LENGTH									
	10	12	14	16	18	20	22	24	26	28
GVSR79	2440	2685	2944	3194	3456	3707	3967	4221	4482	4732
GVSR85	2505	2754	3019	3273	3539	3796	4059	4318	4584	4839
GVSR91	2571	2824	3092	3352	3613	3884	4153	4418	4691	4947
GVSR97	2635	2883	3166	3430	3705	3971	4244	4514	4789	5053
GVSR103	----	----	3239	3510	3789	4057	4338	4611	4891	5160

Body Weight Includes: Base Body, O/H Rear Door, D.O.T. Underride, Mud Flaps, Lighting Per FMVSS 108, Mounting Kit, Kemlite Liner Front, Sides and Ceiling, Steel Reinforcement For One-piece Reefer Unit, 3" Foam Sides And Ceiling, 4" Foam Front And Floor, Smooth Extruded Aluminum Hat Floor, 4" Jr. I-Beam Longitudinals. Weight Tolerance = $\pm 3\%$

"F" - REAR DOOR OPENING HEIGHT ⁶					
BODY HEIGHT	OVERHEAD DOORS				SWING PANEL DOORS
	WHITING TEMPGUARD TODCO 1.12 POLARGUARD		WHITING COLDSAVER TODCO 2.50 POLARGUARD		
	3" AND 4" CEILING FOAM	5" CEILING FOAM	3" AND 4" CEILING FOAM	5" CEILING FOAM	3", 4" AND 5" CEILING FOAM
79	64 -3/8"	63-3/8"	63-3/8"	62-3/8"	69-5/8"
85	70-3/8"	69-3/8"	69-3/8"	68-3/8"	75-5/8"
91	76-3/8"	75-3/8"	75-3/8"	74-3/8"	81-5/8"
97	82-3/8"	81-3/8"	81-3/8"	80-3/8"	87-3/8"
103	88-3/8"	87-3/8"	87-3/8"	86-3/8"	93-5/8"

STANDARD SIDE DOOR LOCATIONS										
BODY LENGTH	10	12	14	16	18	20	22	24	26	28
J	29-1/16"			61-1/16"						

Notes: 8.) Foremost Location Of Side Door Is 13-1/16" From Inside Front Wall.

9.) Door Can Be Moved Fore And Aft of Std. Location on 2" Increments Only.

10.) Door Location Is Based On 4" Of Foam In Front Wall.

A = Overall Width B = Interior Width
 C = Exterior Height D = Interior Height
 E = Rear Door Opening Width
 F = Rear Door Opening Height
 G = Side Door Opening Height
 H = Standard Side Door Opening Height
 J = Leading Edge Of Side Door To Inside Front of Body
 K = Exterior Length of Body
 L = Inside Front Liner To Inside Rear Door Panel
 M = Bottom Of Evaporator Unit To Floor
 N = Bottom Of Condenser Unit To Bottom of Longitudinal (4" I-Beam)
 O = Depth of Refrigeration Unit Condenser
 P = Depth of Refrigeration Unit Evaporator



For More Information Contact Your Morgan Representative or Authorized Morgan Distributor

800-666-7426 ■ www.morgancorp.com

Follow us! [f](#) [t](#)



visit our site

Products as shown may include optional equipment that is not part of the standard Morgan truck body configuration. Some product images may differ from current configurations and may not be available as depicted at the time of your order.

NOTE: All dimensions, weights, and measurements specified herein are subject to Morgan's manufacturing tolerances, may change without notice, and may vary depending on options selected.

Please Contact Morgan Representative for available options, complete up-to-date specifications and for measurements for your particular truck body and chassis specifications.