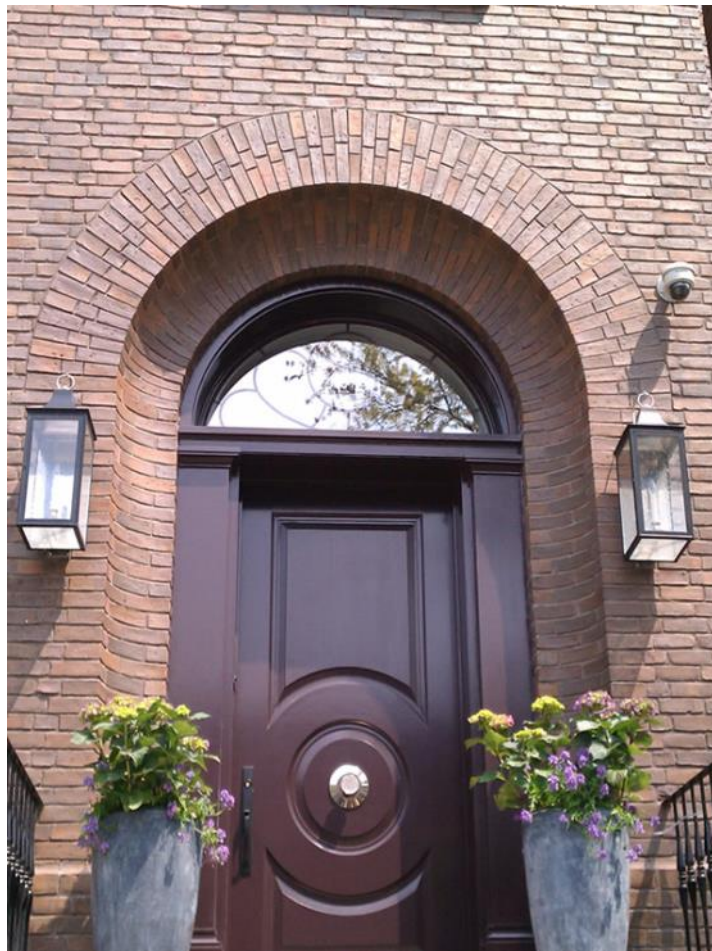




# VERMONT BRICK

AUTHENTIC WATERSTRUCK

*A division of R.J. FINLAY & Co.™*



## What is water-struck brick?

The brick molding process unique to New England is called Water-struck. In this process, very high moisture content surface alluvial clay is pressed into molds. Water is the lubricant used to release the wet clay from the hardwood molds. The resultant troweling effect body as the wet clay slides out leaves behind a textural patina after firing that has never quite been duplicated by any other brick making process.

Water-struck brick have been used extensively since early Colonial time in the entire New England area. The surface alluvial clay in much of New England has lent itself to this method of manufacture because of its naturally occurring high moisture content and high plasticity. Early examples of this water-struck brick would be The Peter Tufts (Cradock) House in Medford, MA (pre-1677) and the Old State House in Boston, completed in 1713 but still in daily use.

Locally in New England, because Waterstruck was the most prevalent molded brick on the scene, the lore of its virtual indestructibility was attributed to its manufacturing process. The reality is that the exceptional durability of this type of brick is due to its superior absorption rate and high compressive strength – both a function of the alluvial clay deposited near the earth's surface by the recession of the last glaciers at the end of the Ice Age.

Water-struck brick has frequently been mistakenly thought of as vehicle for designs expressing limited architectural styles such as Colonial, Georgian , Richardsonian, Victorian and sometimes Neo-Tudor or even Neo-Georgian. This view ignores Saarinen's *avant garde* 1955 design of the MIT Chapel with water-struck brick. And, of course, Louis Kahn's Class of 1945 Library at Phillips Exeter, designed with water-struck brick in the mid-1960s remains to this day an icon of Modern Architecture. (Please note that both of these projects were built with water-struck clinkers from the now defunct Eno Brick Company of Exeter, New Hampshire.)



MIT Chapel, Cambridge MA



# The Proven Durability of Water-struck Brick



## The Peter Tufts (Cradock) House

Known for many years as the Cradock House because it was thought to have been built in 1634 for Mathew Cradock, the construction of the house is now attributed to Peter Tufts. Many historians consider it to be the oldest all-brick house in North America.

**Although the exact date of its origin is obscure, it is known to pre-date 1677.**

Source: Medford Historical Society, 1989

Test results below indicate why water-struck brick manufacturers for over 300 years and Vermont Brick in particular proudly claim

# Proven Durability

	Compressive Strength	Absorption			Suction Rate	Efflorescence
<b>University Range Face Brick</b>	Pounds Per Square Inch	5 Hour Submersion in Boiling Water	24 Hour Submersion in Cold Water	Maximum Saturation Coefficient (24 hour/5 Hour)	Oven-Dried Procedure Gain in Weight in One Minute	
Average	<b>17,660 psi</b>	<b>4.9%</b>	<b>2.7%</b>	<b>0.54</b>	<b>3 grams</b>	<u>None</u>
	Compressive Strength	Absorption			Suction Rate	Efflorescence
<b>Montpelier Red Face Brick</b>	Pounds Per Square Inch	5 Hour Submersion in Boiling Water	24 Hour Submersion in Cold Water	Maximum Saturation Coefficient (24 hour/5 Hour)	Oven-Dried Procedure Gain in Weight in One Minute	
Average	<b>18,440 psi</b>	<b>4.3%</b>	<b>2.2%</b>	<b>.5</b>	<b>2 grams</b>	<u>None</u>
	Compressive Strength	Absorption			Suction Rate	Efflorescence
<b>Market Square Paver</b>	Pounds Per Square Inch	5 Hour Submersion in Boiling Water	24 Hour Submersion in Cold Water	Maximum Saturation Coefficient (24 hour/5 Hour)	Oven-Dried Procedure Gain in Weight in One Minute	
Average	<b>19,970 psi</b>	<b>5.9%</b>	<b>3.3%</b>	<b>0.55</b>	<b>5 grams</b>	<u>None</u>

**NOTE:**

- > RJF Vermont Brick provides test reports and certification letters for all ranges of face brick and paving brick which warrant that the requirements of ASTM/CSA have been met or exceeded on a project by project basis on request from its authorized distributors when specific project information has been received.
- > All color ranges in this brochure meet or exceed the requirements of ASTM C-216, Grade SW, Type FBA and the CSA equivalent for face brick and ASTM C-902, Class SX, Type I, PA and the CSA equivalent for paving brick.
- > Color reproduction in this brochure may well vary from the actual color of physical samples. No color representations are implied or warranted except through project specific field panels of actual brick, requested by an authorized distributor and formally submitted from the Vermont Brick plant in Highgate Center, Vermont.

**Vermont Brick offers a broad range of water-struck face brick with brick shape making capability for face brick and full 4x8” paving brick. The HIGHGATE SERIES of purpose-made clinker brick use face brick shapes .**

**FACE BRICK**

**Montpelier Red**

**Montpelier Red Light**

**University Range Light**

**University Range**

**University Range Dark**

**Woodstock Antiques**

**Bennington B&B Accents**

**Black Selects**

**Red Restoration**

**Flashed Restoration**

**Red Ontario Size**

**Flashed Ontario Size**

**4x8” PAVING BRICK**

**Montpelier Red 4x8s**

**Market Square 4x8s**

**University 4x8s**

**Town Square 4x8s**

*If you can draw the condition, we can generally find a way to describe the shapes required and make them! We've been at this awhile.*

**HIGHGATE SERIES**

**CLINKER BRICK**

**HG 1 Highgate Royale**

**HG 2 Acadia Blend**

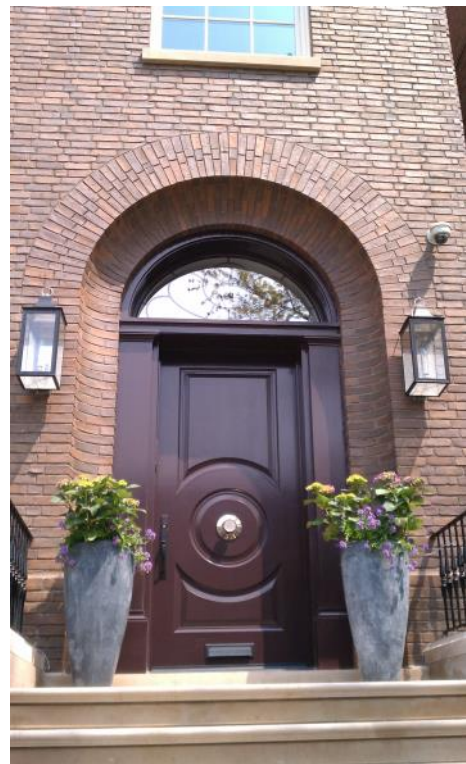
**HG 3 Royal Red**

**HG 4 Moonshadow**

**HG 5 Greenville Manor**

**HG 6 Chateau Highgate**

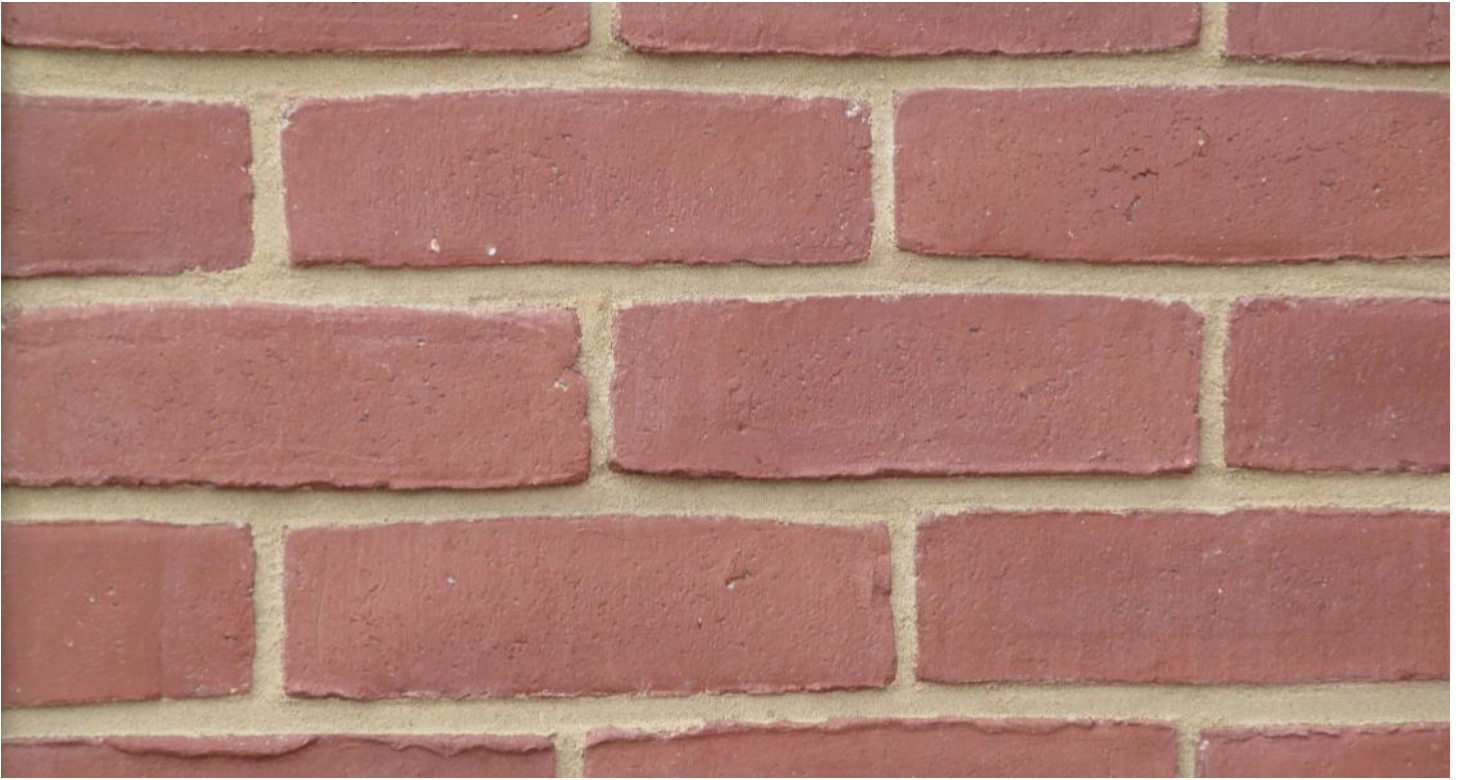
**HG 7 Montpelier Manor**





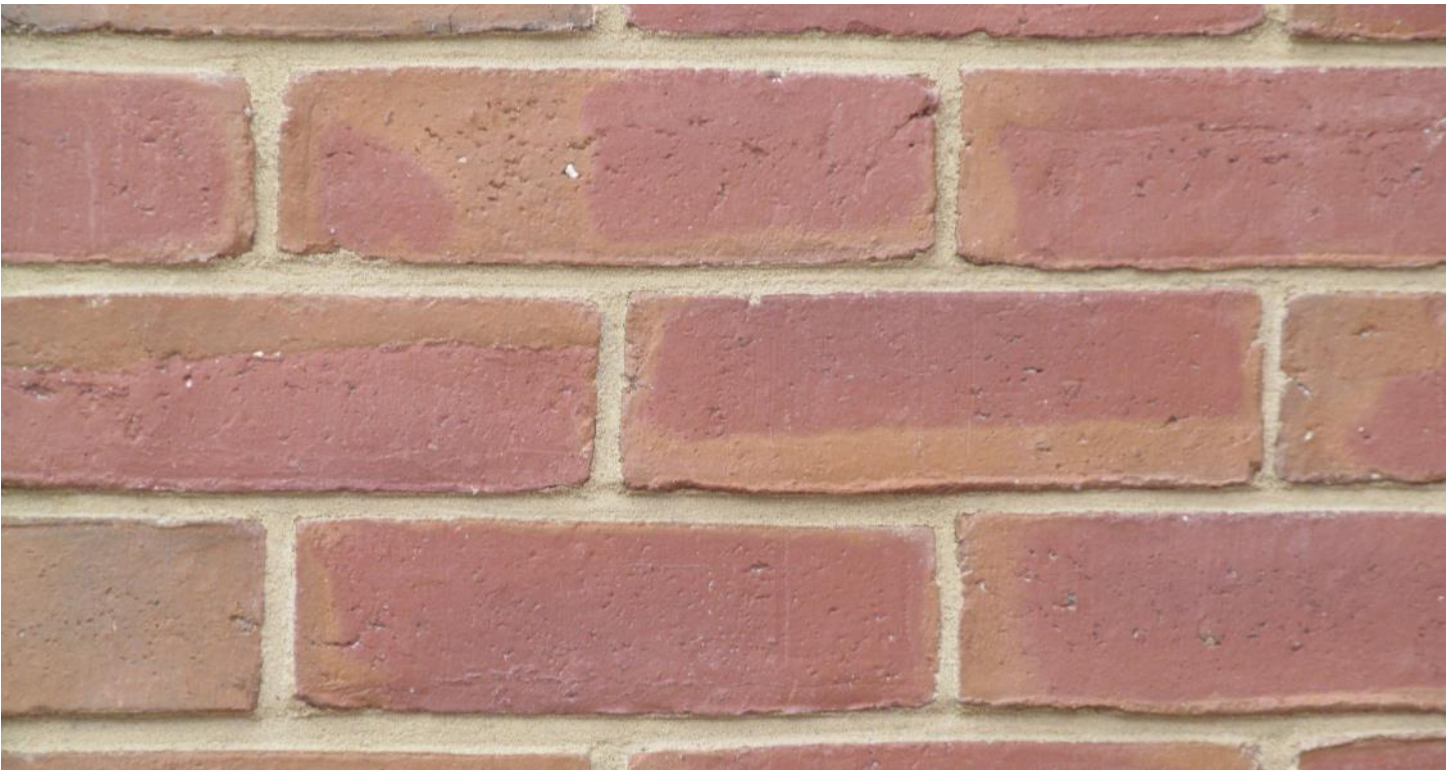
**Montpelier Red**

**3  $\frac{5}{8}$  x 2  $\frac{1}{4}$  x 7  $\frac{5}{8}$ "**



**University Range Light**

**3  $\frac{5}{8}$  x 2  $\frac{1}{4}$  x 7  $\frac{5}{8}$ "**





**University Range**

3 5/8 x 2 1/4 x 7 5/8"



**University Range Dark**

3 5/8 x 2 1/4 x 7 5/8"





**Woodstock Antiques**

$3 \frac{5}{8} \times 2 \frac{1}{4} \times 7 \frac{5}{8}$ "



**Bennington B&B Accents**

$3 \frac{5}{8} \times 2 \frac{1}{4} \times 7 \frac{5}{8}$ "





**Black Selects**

**3  $\frac{5}{8}$  x 2  $\frac{1}{4}$  x 7  $\frac{5}{8}$ "**



**Red Restoration**

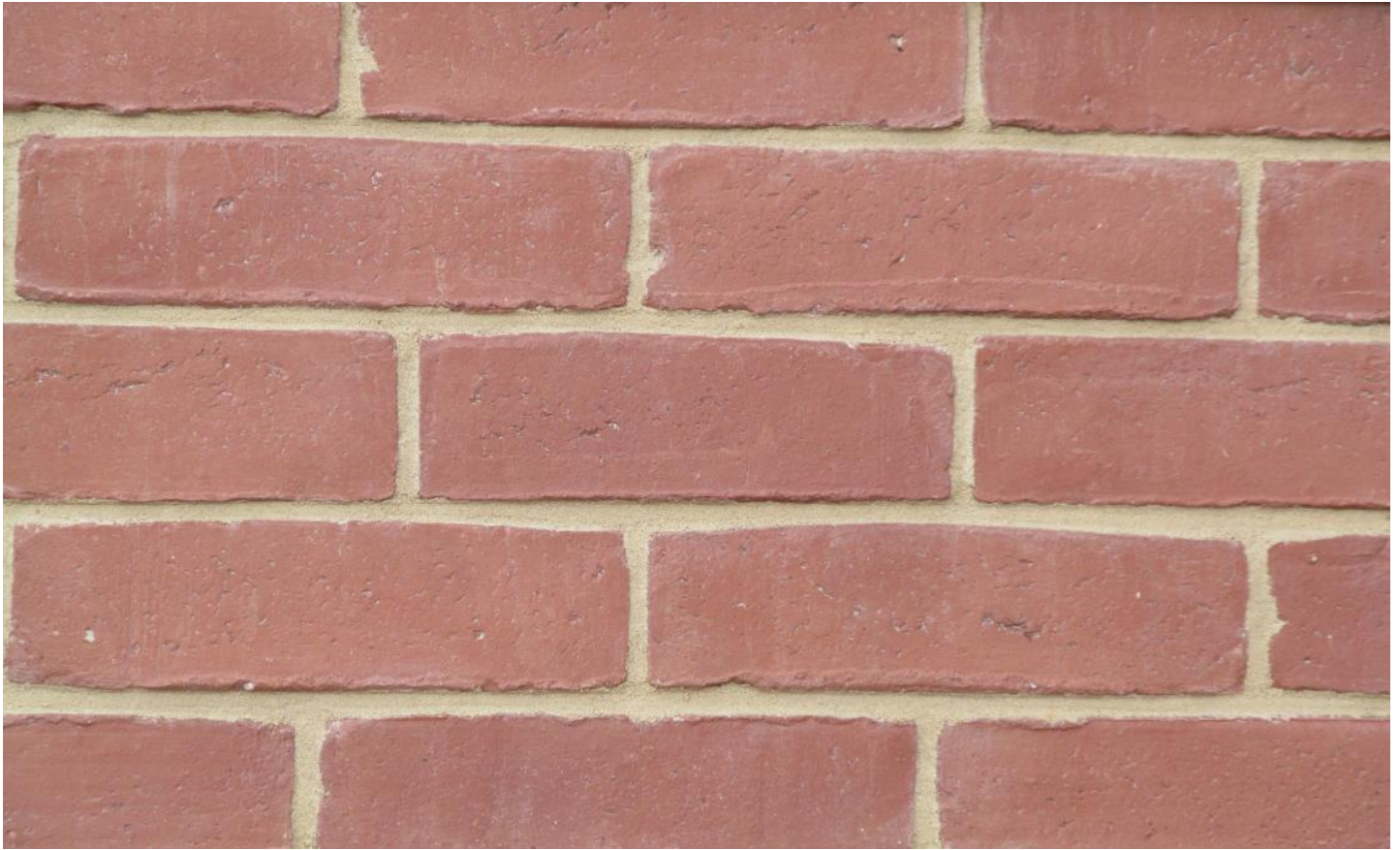
**3  $\frac{5}{8}$  x 1  $\frac{7}{8}$  x 7  $\frac{1}{4}$ "**





**Red Ontario**

4 X 2 $\frac{3}{8}$  X 8 $\frac{3}{8}$ "



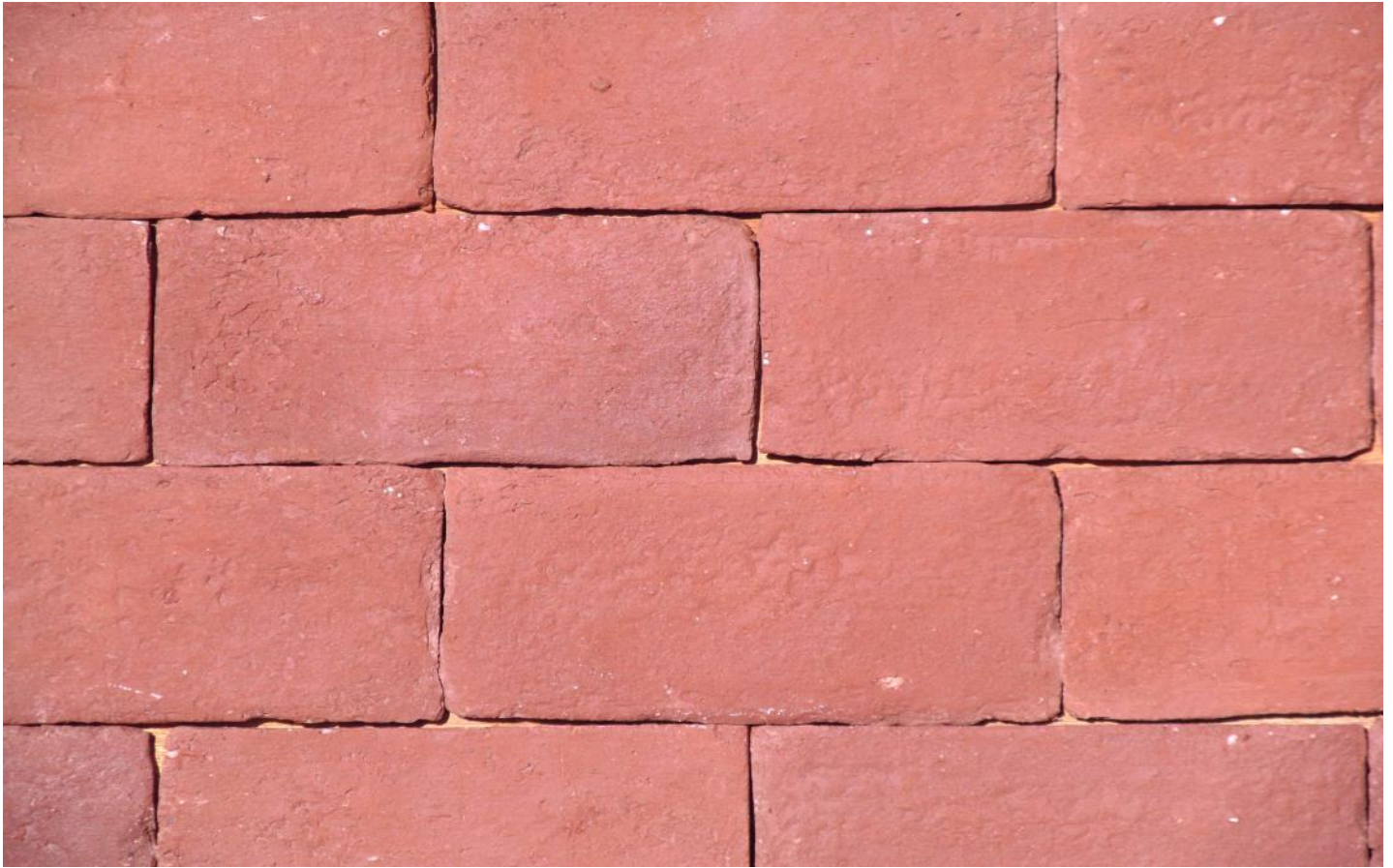
**Flashed Ontario**

4 X 2 $\frac{3}{8}$  X 8 $\frac{3}{8}$ "





**Montpelier Red 4x8s**

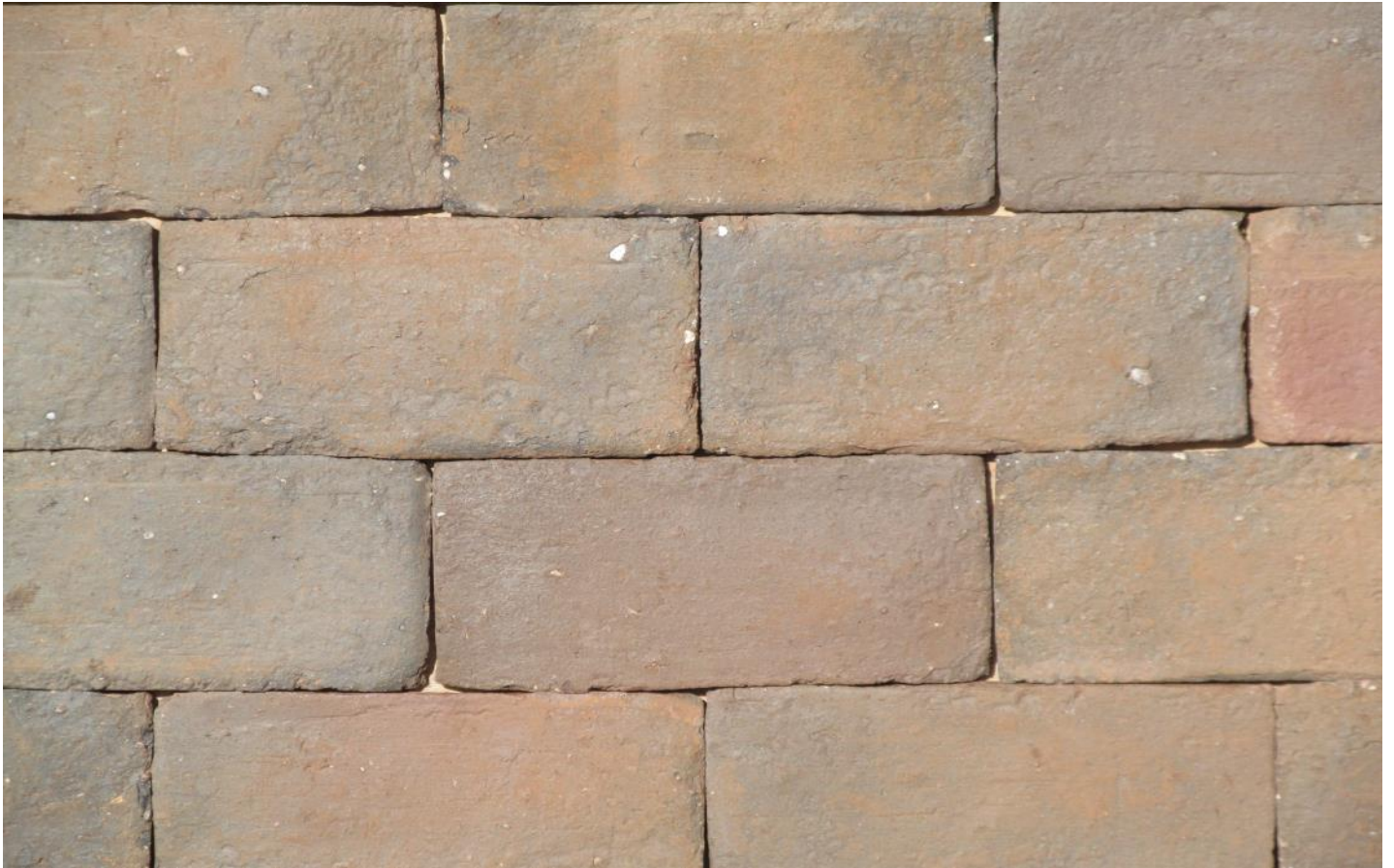


**Market Square 4x8s**

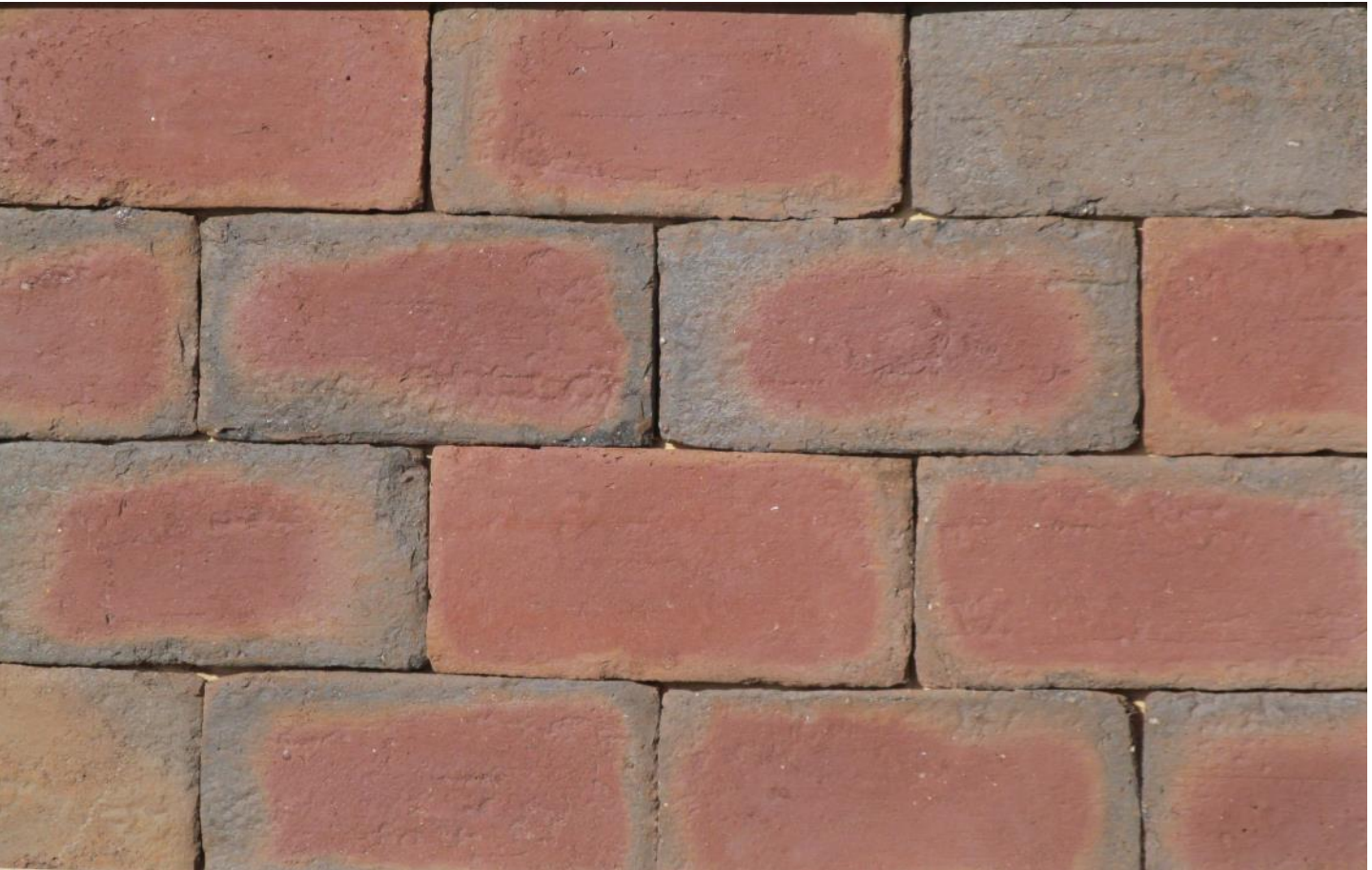




**University 4x8s**



**Town Square 4x8s**

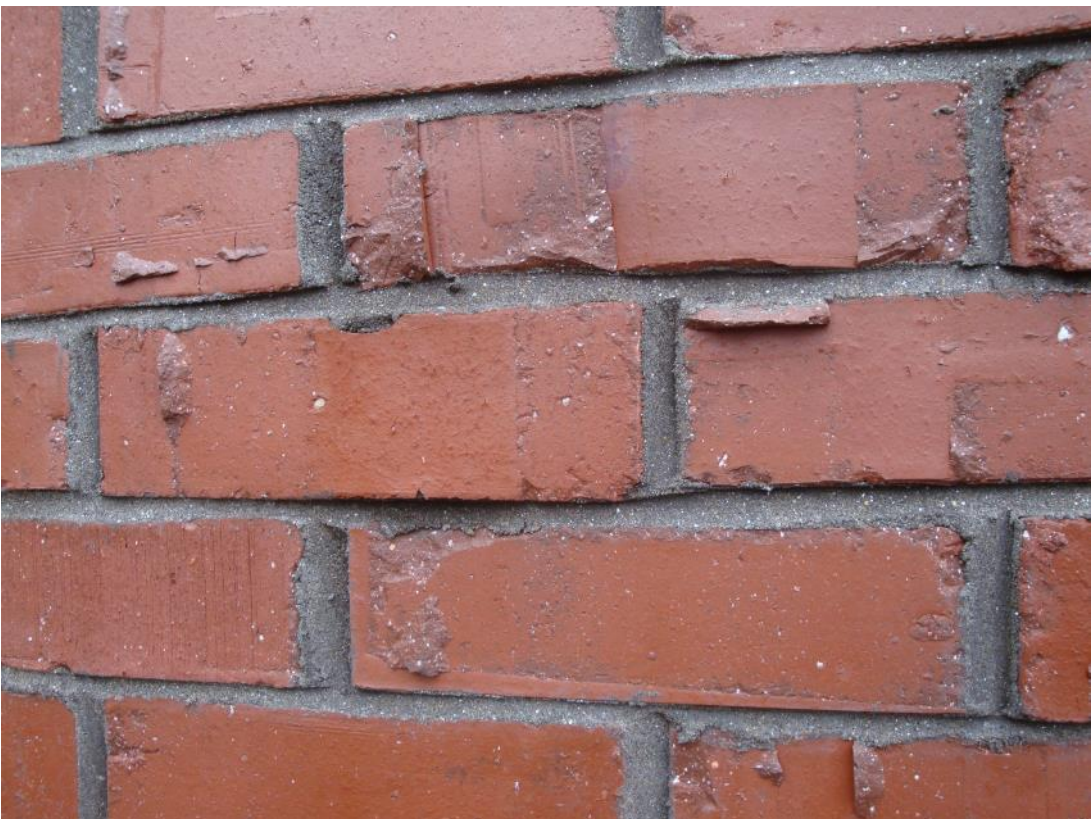




**HG 1 Highgate Royale**



**HG 3 Royal Red**





**HG 2 Acadia Blend**



**HG 4 Moonshadow**





**HG 5 Greenville Manor**



**HG 6 Chateau Highgate**





## HG 7 Montpelier Manor



The images on the next three pages illustrate how others have creatively used clinkers in the past.







Summer Retreat – Northfarthing, The Shire, Middle-earth

*We will be shocked, just shocked, if this turns out to be a Hobbit hoax!*



Hemenway Gymnasium, Harvard University, 1938

*Definitely not a hoax! Also not by Hobbits either.*





**Private Residence, Southern California**



**Water Tower, Seattle**



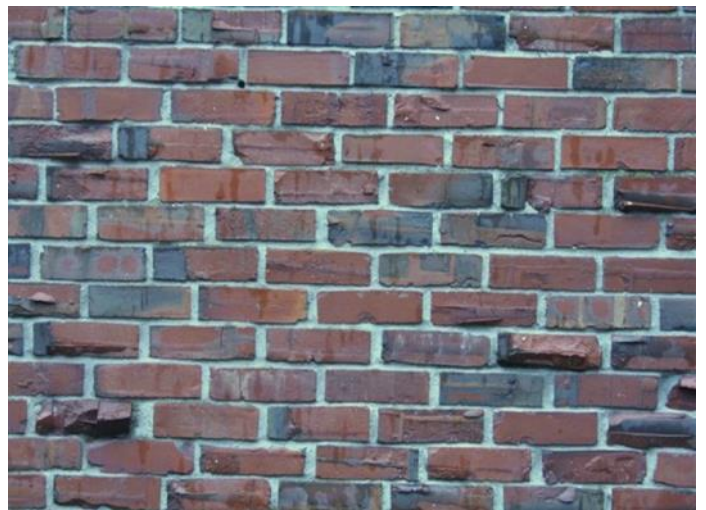


**Local Bank, Auburn Maine**



**Private Residence, Central Maine**

**Assisted Living Facility, Greater Boston**





**Rich**  
**Elegant**

**Simple**  
**Unusual**



**VERMONT BRICK**  
AUTHENTIC WATERSTRUCK

*A division of R.J. FINLAY & CO.<sup>SM</sup>*

P.O. Box 330 • Highgate Center, VT 05459 • (802) 868-5354

[www.vermontbrick.com](http://www.vermontbrick.com)