



Contractors License 544530
P.O. Box 591-I, Healdsburg, CA 95448-0590
1-888-UNPLUGU • (707) 433-8053 • FAX(707) 433-8085
www.unplugu.com

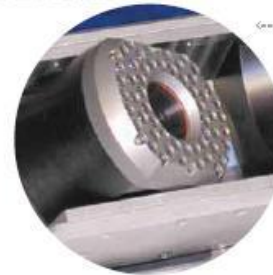
Lateral Pipeline Inspections from the Sewer Main

GEN2 ZOOM MAINLINE AND LATERAL INSPECTION SYSTEM

The Gen2 Zoom System performs mainline and lateral pipeline inspections from a single, fully integrated unit.

The system utilizes picture-in-picture or dual video monitors allowing operators to view the mainline and lateral lines simultaneously.

- ✓ Inspect mainlines from 6" to 24" and 4" to 8" lateral lines
- ✓ 40:1 zoom pan and rotate mainline camera with auto iris and auto focus
- ✓ High resolution 1545 lateral camera with auto-uprighting picture, retracts at the rate of up to 30" per minute and features an integrated 512Hz sonde for locating
- ✓ Capable of mainline inspections up to 500' in length with lateral inspections of up to 150'
- ✓ Electronically synchronized mainline and lateral launch cable reels for ease of retrieval during and after inspection



- ✓ Picture-in-Picture format or dual video monitor view format
- ✓ View mainline and lateral simultaneously
- ✓ 6-Wheel drive tractor features three forward speeds, reverse and freewheel
- ✓ Optional locating receiver available





Contractors License 544530
P.O. Box 591-I, Healdsburg, CA 95448-0590
1-888-UNPLUGU • (707) 433-8053 • FAX(707) 433-8085
www.unplugu.com

Lateral Pipeline Inspections from the Sewer Main: The Process

Lateral launch cameras provide the tool necessary to inspect sewer laterals together with the sewer main in one process.

The mainline camera transport can inspect pipe 6" diameter and larger and can travel over 500' from manhole to manhole.

The launch camera will inspect 4" diameter and larger laterals with a range of over 100'.



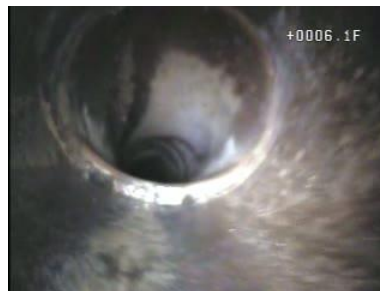
From the sewer main, a sewer lateral is targeted for inspection at the 1 o'clock position by the mainline camera.



The launch camera is aligned with the lateral to be inspected.



The launch camera enters the lateral from the sewer main.



As the launch camera travels up the sewer lateral, video captures any defects along with footage locations.



A cross-bore is located in the sewer lateral.