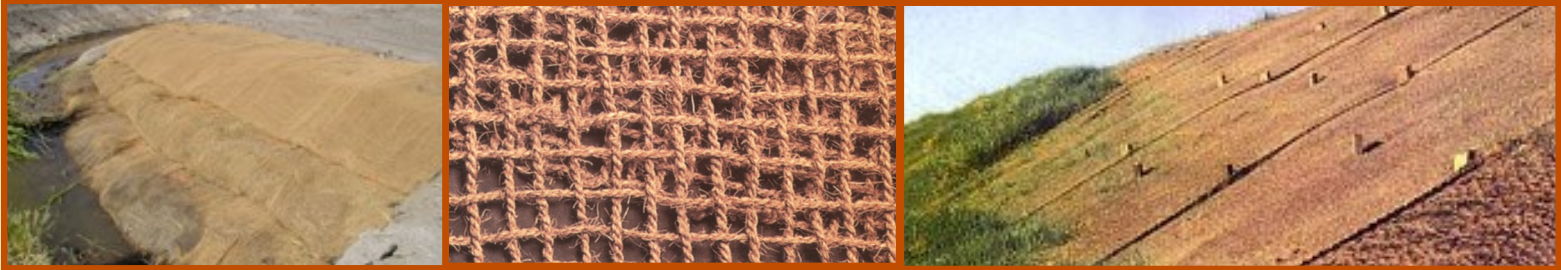




Erosion Solutions Inc.
 960-98th Avenue
 Oakland, CA 94603
 Tel 510-632-5637 Mobile 209-712-2616
 Fax 510-632-2056

Nedia KoirMat™ 400 GR.



DESCRIPTION:

Nedia's KoirMat™ 400 GR. is made from 100% natural fresh water lagoon seasoned coir fiber and is 100% biodegradable. High tensile strength and durability make it suitable for the most severe erosion control problems, such as steep slopes and high velocity flow channels. This matting lasts four to eight years, allowing for full vegetation establishment and is easy to install! Roll size are 6.5' X 165' or 13' X 82' which is a total of 120 sq./yd.

ITEM CODE: CM4001382

WEIGHT: 196# Per roll

SHIPPING CLASS: CLASS 125

CASE PACK: Roll

CUBE DEMINSIONS: 14"Hx14"Wx13'L

*Where Your
 Problems Today
 Are Our Solutions
 For Tomorrow*



Chris A. Marr CPESC #2211



ESI Resource Services LLC
 11854 Larisa Way
 Rancho Cordova, CA 95742
 Tel 916-985-7787 Fax 916-985-7887



Chris A. Marr CPESC #2211

Certificate of Compliance

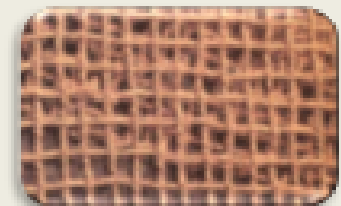
DATE: 12-29-14

KoirMat™ 400 GR. SQ/M 11.80 oz. SQ. /YD.

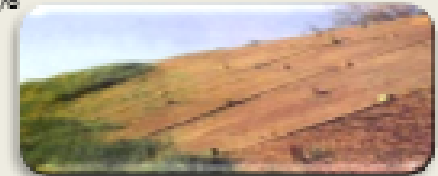
As a manufacture representative of "KoirMat™ 400 gram roll", we certify that the material to be supplied will meet or exceed the following Physical specifications.

Fabric Structure: Coconut Fiber Yarn: Nat. Woven Coconut Fiber

Physical Property:	Test Method:	Min. Avg. Roll Value
Construction:		Woven Coconut fiber
Fabric Weight:	ASTM D-5261	11.8 oz / sq. yd.
Width Tensile Strength Dry:	ASTM D4595	42-40 lbs. /in.
Max. Elongation Dry:	ASTM D4595	33-31 %.
Width Tensile Strength Wet:	ASTM D4595	38-30 lbs. /in.
Max. Elongation Wet:	ASTM D4595	36 -31 %.
Water Absorption:	ASTM D1117	163 %
Water Velocity:	Flume Tests	8 ft/sec
Open Area:		65%



Sizes are 6.5' X 165'(120 sq./yd.), 13'.1 x 165' (240 sq./yd.)



We at ESI Resource Services LLC look forward for future business with your company.

Chris A. Marr Aff.M.ASCE CPESC #2211
 ESI Resource Services LLC
 WCIECA Board Member
 Tel# 916-985-7787 Fax# 916-9857887

