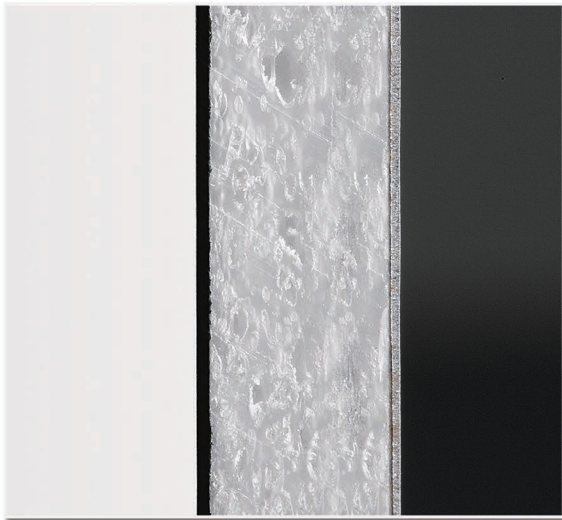




Refrigerated - Morganplate



Proprietary Material, Composed of a High-Density Polyethylene Core Bonded Between Two Sheets of Painted, High Strength, 80ksi Yield, Galvanized Steel

STANDARD FEATURES

SUBFRAME - 3" I-beam Crossmembers 12" Centers 3" Structural Longrail, Mylar Tape Is Applied Between All Steel Subframe Components And Extruded Aluminum Lower Bottom Rails To Prevent Corrosion

FLOOR - Aluminum Extruded Hat-smooth With 6" Scuff 1

THRESHOLD - Stainless Flush To Rear With Thermobreak And Composite Buildup

REAR DOOR - Whiting Tempguard

Rear Frame - Stainless Steel, Including Built-in Header Design, Clearance Light Protector And Rain Deflector - Curbside And Roadside Grab Handles

ROOF - .032" One Piece Aluminum Sheet With Anti-sag Roof Bows On 24" Centers, With Crowded Rood Design, Which Helps Prevent Water/Ice Pooling

SKINS - Morganplate – Provides Ultimate Protection Against Damage and Moisture

SIDE WALL - Extruded Aluminum Top And Bottom Rails With 1 3/8 In. Deep Extruded Aluminum Z-shaped Vertical Posts Installed On 16 In. Centers

SCUFF - 3" With Hat Floor

INSULATION - Urethane Foam-
Front 4" / Side 3" / Ceiling 3" / Floor 4" / Rear 3"

INTERIOR LINER - USDA Approved Seamless Glassboard

FRONT END - Aerodynamic Design, With Patented Poly-tuff Corner Caps, Plastic Refrigerated Dormer And Folding Steps And Grab Handle Mounted On Front Radius

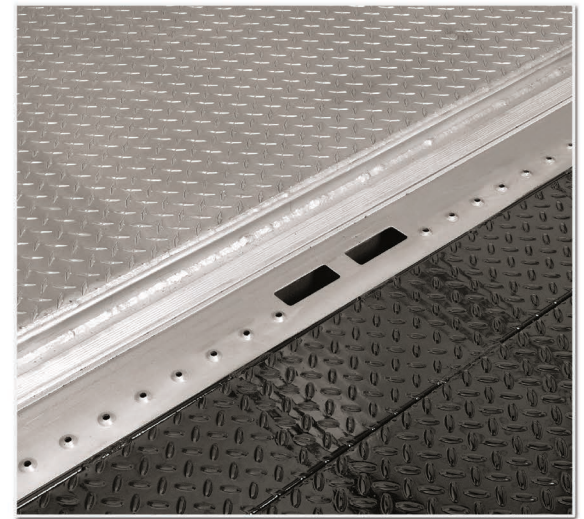
BUMPER - 5" Structural Bumper With Pooched Surface And Closure Plate

INTERIOR LIGHTING - (1)dome With Switch In Cab Without Loom

EXTERIOR LIGHTING - Led Sealed Clearance Lights, Per Fmvss-108

MOUNTING - Full Mount-u Bolt

MUDFLAPS - Morgan 24" X 36" Black



Morgan's exclusive full-perimeter thermal breaks on doors and thresholds reduce outside heat from reaching inside cargo, add-in our slip-resistant, rear door threshold and you have safe and efficient cargo area.



Strategically placed grab handles and a variety of service step configurations provide easy access to the service platform, and lend to a safer work environment.



Refrigerated Body's floor is fully insulated using Morgan's poured-in-place polyurethane foam process to ensure consistent density and equal insulation across the entire floor.



Cargo Interior Shown with E-track

OPTIONS

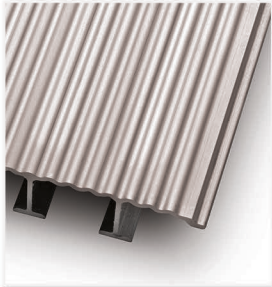
Morgan Refrigerated truck bodies are already the best built and equipped in the industry. But you can further enhance their performance with a wide range of options. From bumpers, cargo-restraint systems and doors, to liners, liftgates and much more, trust Morgan to exceed your highest expectations.

- 4" and 5" insulation packages available
- Walkramps
- Liftgates
- Refrigeration unit and installation
- Cargo restraint systems
- Strip curtains
- Bulkheads - permanent or moveable
- Side and rear door options
- Various flooring options
- Custom paint and decal installation
- Various lighting options
- Galvannealed rear frame
- Multi-temperature applications
- Custom side door steps
- Customized rear bumpers
- Shelving and rack systems
- Various scuff plate options
- Maximizer swing side door

Options That Set the Standard



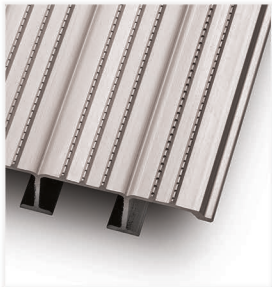
1 1/4" Aluminum (Hat) Floor



1 1/4" Aluminum (Inverted T) Ribbed Floor



1 1/4" Aluminum (Hat) Floor with Anti-Skid Surface



1 1/4" Aluminum (Inverted T) Anti-Skid Floor



Cargo Interior Shown With E-track, Bulkhead/Multi-Temp Configuration and Strip-Curtain



Perhaps The Only Thing More Frustrating Than Having To Service Your Refrigeration Equipment Is Not Being Able To Access It Easily! Morgan's Body-or-cab-mounted (shown) Service Platforms Make It Easier (and Safer) To Maintain Your Refrigeration Unit



For More Information Contact Your Morgan Representative or Authorized Morgan Distributor

800-666-7426 ■ www.morgancorp.com Follow us!  



visit our site

Products as shown may include optional equipment that is not part of the standard Morgan truck body configuration. Some product images may differ from current configurations and may not be available as depicted at the time of your order.

NOTE: All dimensions, weights, and measurements specified herein are subject to Morgan's manufacturing tolerances, may change without notice, and may vary depending on options selected.

Please Contact Morgan Representative for available options, complete up-to-date specifications and for measurements for your particular truck body and chassis specifications.